



# NRLI Value & Impacts on Florida Farm Bureau Federation

Michele Curts, NRLI Class 23

The background of the slide is a close-up photograph of several strawberries, heavily tinted with a solid blue color. The strawberries are in various stages of ripeness, with some showing more red than others, though the blue tint masks the natural colors. The texture of the strawberry seeds and the shape of the leaves are visible.

The Issue:

**Is there value in Florida Farm Bureau  
Federation staff participating in the NRLI  
Program?**



# Crowd Buy-in (Stakeholders)

- FFBF Staff ranging from NRLI Class 3 – 22
- Levels of Leadership varied
- 7+ years of FFBF experience



# Focus Group

FLORIDA FARM BUREAU FEDERATION



Triangle of  
Needs &  
Interests

Power  
Dynamics &  
Titles

Framing

Listening  
Skills

Facilitation  
Skills

Inclusive  
Strategies



# The Questions

# Icebreaker: Class number & favorite Session

- Class 3, 9, 13, 15 .....Apalachicola
- Class 11 .....Lake Placid
- Class 12 .....Key Largo
- Class 16, 21, 22 .....Everglades
- Class 17 .....Destin

\*Interesting Observation\*

Question 1:

What was your favorite NRLI  
experience?



- Building relationships
  - Kayaking down Santa Fe River
  - Class dinner hosted at Project Team member's house
- Experiences
  - Staying in Cheeky Huts in Everglades
  - Visiting different locations & learning about the issues
  - Airboat rides in Everglades
- Learning
  - How to manage conflict (Tactfully!)
  - Map Project to connect with others

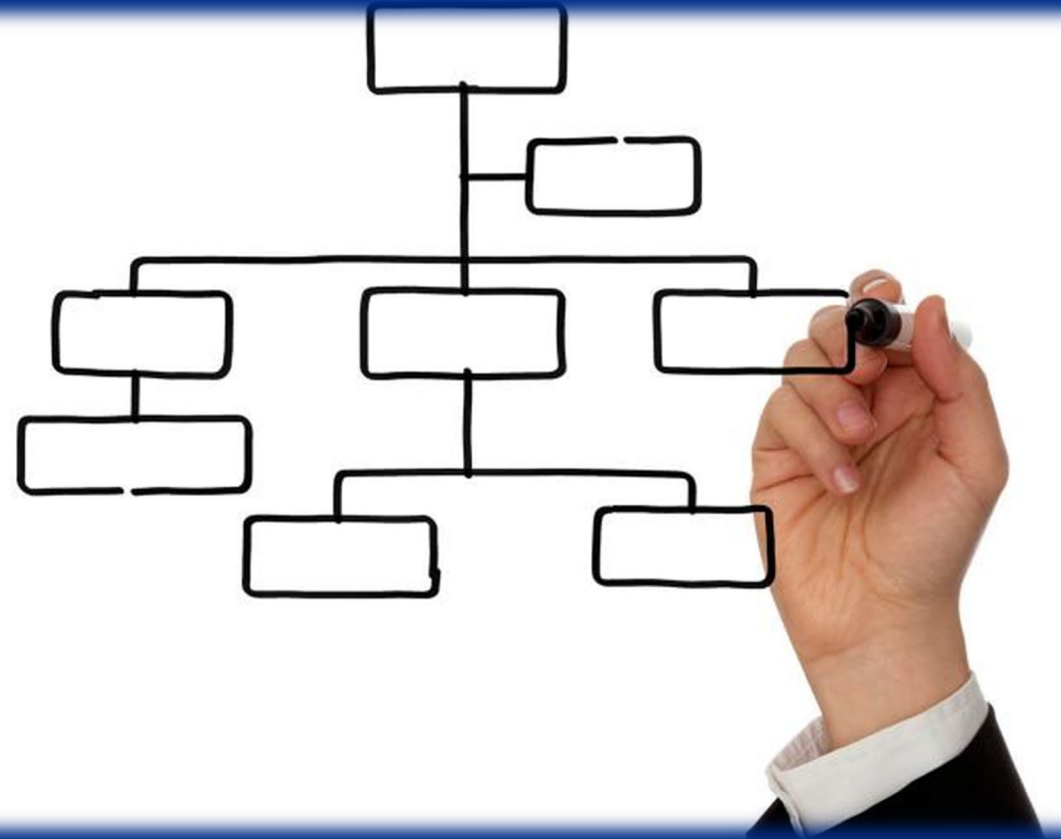


## Question 2:

Since completing NRLI, have you  
changed jobs inside or outside FFBF?

# YES!

- 7 Promotions
- 2 left organization and returned to new positions
- 1 New position



## Question 3:

What skills did you learn in NRLI that you have used in your role or FFBF?

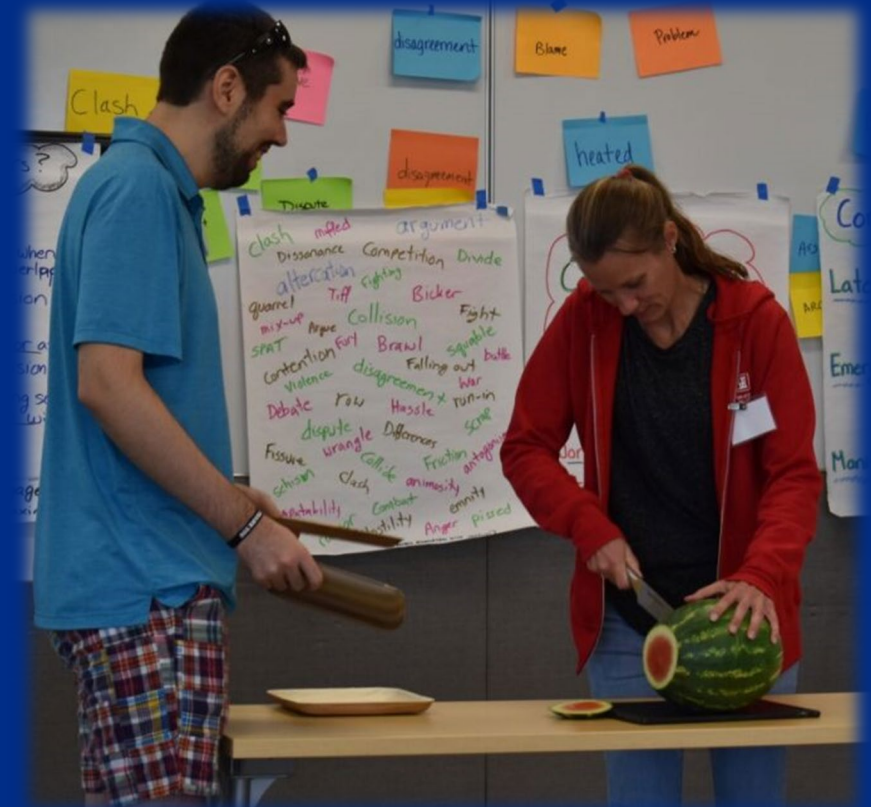


- **Conflict Resolution**

- See other's viewpoint
- Managing difficult conversations to find a resolution/compromise
- Connection between agriculture and consumers
- Understanding their needs/motivations

- **Facilitation**

- Process Agenda
- Framing
- Looking Back & Looking Forward



Question 4:

Does NRLI benefit Florida Farm Bureau  
Federation?

# YES!

- Building networks with other organizations
- Understanding issues impacting ag and natural resources
- Bring agricultural knowledge to no ag related individuals
- Conflict management skills
- Facilitation skills
- Developed skills that benefit personal relationships
- Build stronger relationships with producer member





## Question 5:

How did attending monthly, three-day sessions impact your workload?



Practicum/Work project

Company Support

Forced Planning

Set Schedule

FLORIDA FARM BUREAU FEDERATION

## Question 6:

What was the most valuable/impactful thing you gained from your NRLI experience?



Working  
with  
stakeholders

Network/  
Relationships

Facilitation  
Skills

Learning  
about issues

Project Team  
Resources

Project Team  
Leadership  
Style

## Question 7: Written Response

If you could think of one Farm Bureau member to nominate for NRLI, who would it be?



# Lessons Learned



# Moving Forward



making processes  
• Hear from alumni about  
practicum experiences

**DAY III** - Friday Nov. 12<sup>th</sup>  
8:15 Agenda review  
8:30 Grp Dynamics & Dec. Making  
10:15 **BREAK**  
10:30 Session review (Jessica, Emma,  
Megan)  
11:15 Feedback forum (Michelle, Sarah,  
Ben)  
11:45 Session wrap-up  
12:00 **LAUNCH** -

# Questions?

FLORIDA FARM BUREAU FEDERATION



“This absolutely was the right time  
to do NRLI and right class for me to  
be a part of.”

~Michele Curts, NRLI Class 23