

# Living Shorelines – Promoting a Softer Approach than Coastal Hardening

**Florida Natural Resources Leadership Institute**

**Class VIII**

**October 16-18, 2008**

Melody Ray-Culp  
U.S. Fish and Wildlife Service  
Panama City, FL

Chrissy Hensel  
EarthBalance  
Davenport, FL



Photo: C. Verlinde, University of Florida Sea Grant Extension

# **Living Shoreline Workshop June 13, 2008**

**Gulf Coast  
Community College  
Panama City**



Photo: Florida Department of Environmental Protection





# **Panhandle Living Shoreline Initiative**

To establish living shorelines as the primary means for protecting eroding shorelines in the coastal areas of northwest Florida where appropriate, thereby steering coastal protection towards soft alternatives and away from hardening.



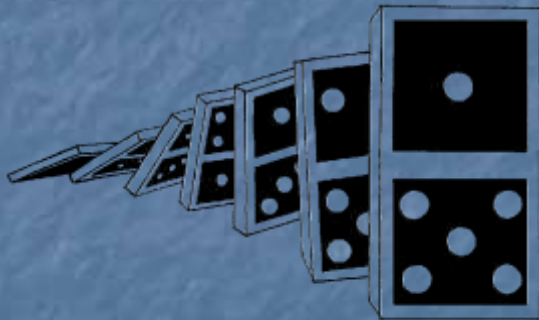
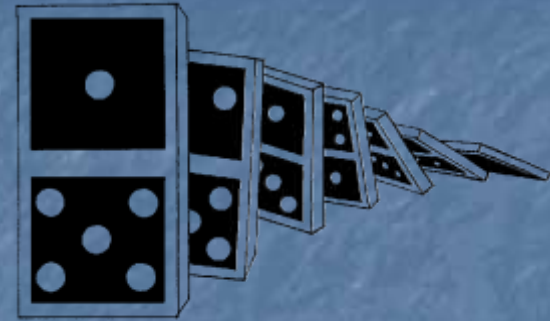
# What are living shorelines?



Photo: Florida Department of Environmental Protection



**Tampa Bay**



**Miami**





<b>Suwannee River</b> Landscaping	<b>Shore Builders</b> I.N.C. Marine Construction
Palms, Plants	Docks
Mulch, Sod	Boat Lifts
Irrigation	<del>Sea</del> Walls
Landscape Design	Boat Houses
<b>352 578-4205</b>	<b>352 339-3322</b>

**Living Shorelines**







Photo: Florida Department of Environmental Protection

# Partners

- Apalachicola Riverkeeper
- Apalachicola National Estuarine Research Reserve
- Bay Area Resource Council
- BEST, Inc, & Friends of St. Andrew Bay
- Choctawhatchee Basin Alliance
- City of Fort Walton Beach
- City of Gulf Breeze
- EarthBalance
- Ecological Consulting Services
- Florida Department of Environmental Protection
- Mississippi State University and Mississippi-Alabama Sea Grant Consortium
- National Oceanic and Atmospheric Administration
- The Nature Conservancy
- PBS&J
- St. Andrew Bay Resource Management Association
- Seahaven Consulting
- U.S. Fish & Wildlife Service
- University of Florida Conservation Clinic
- University of Florida Sea Grant Extension
- West Florida Regional Planning Council

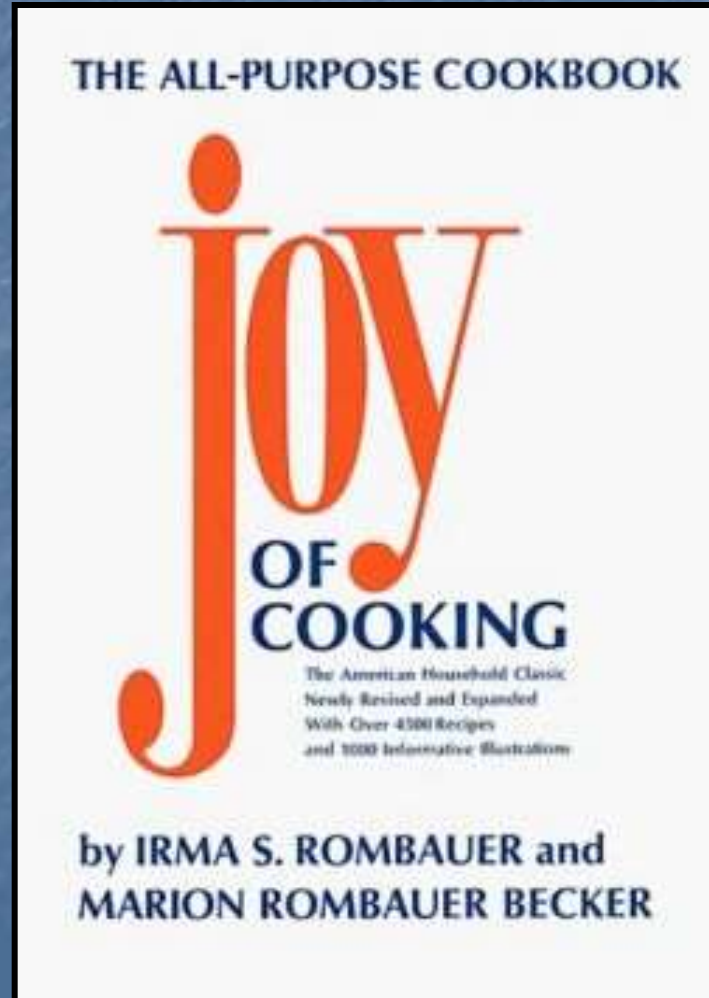




**Do nothing**



# The Living Shorelines Cookbook





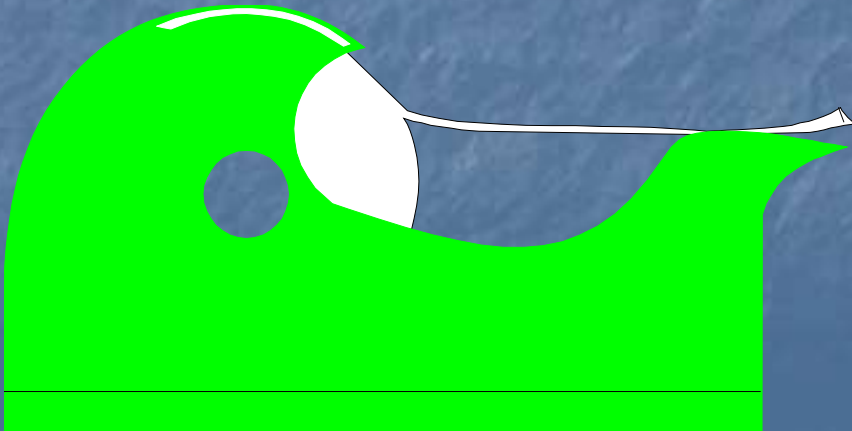
# Regulatory and Permitting 101

**Good LSL permit applications**

**=**

**Easier permitting**

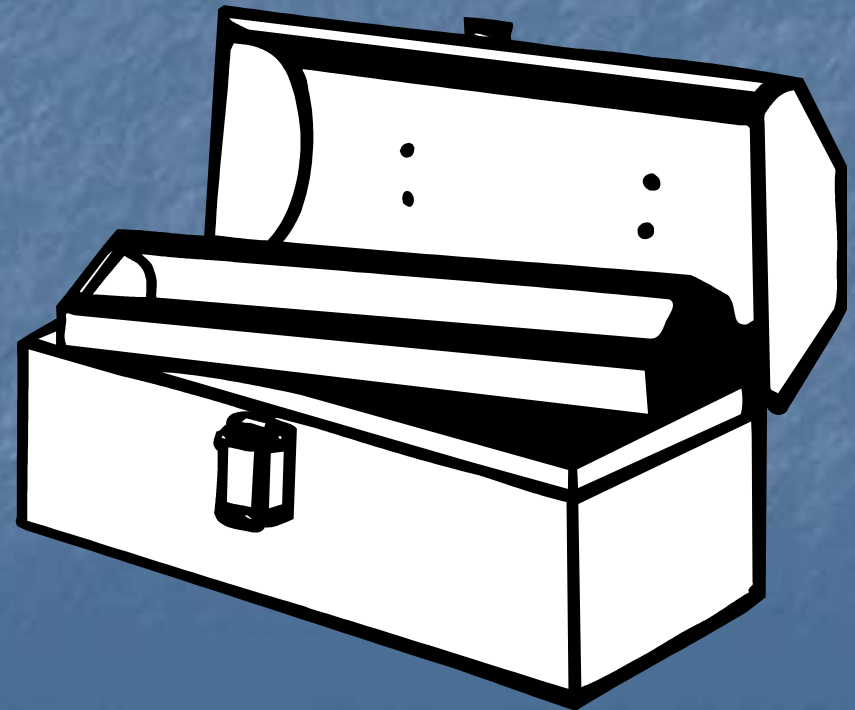
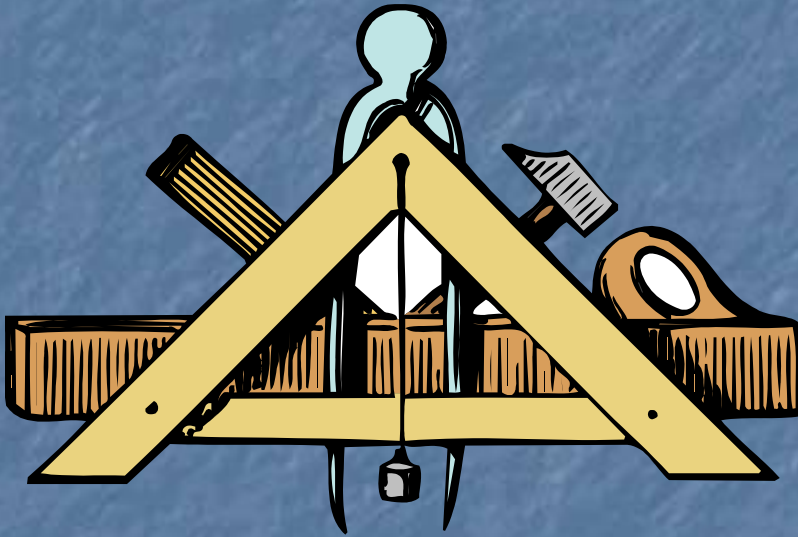
**Green tape**



**Red tape**



# Contractors





**Land managers**

**Contractors**

**Volunteers**

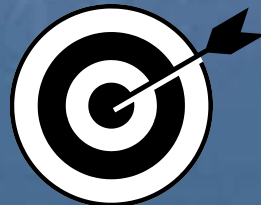
**Regulators**



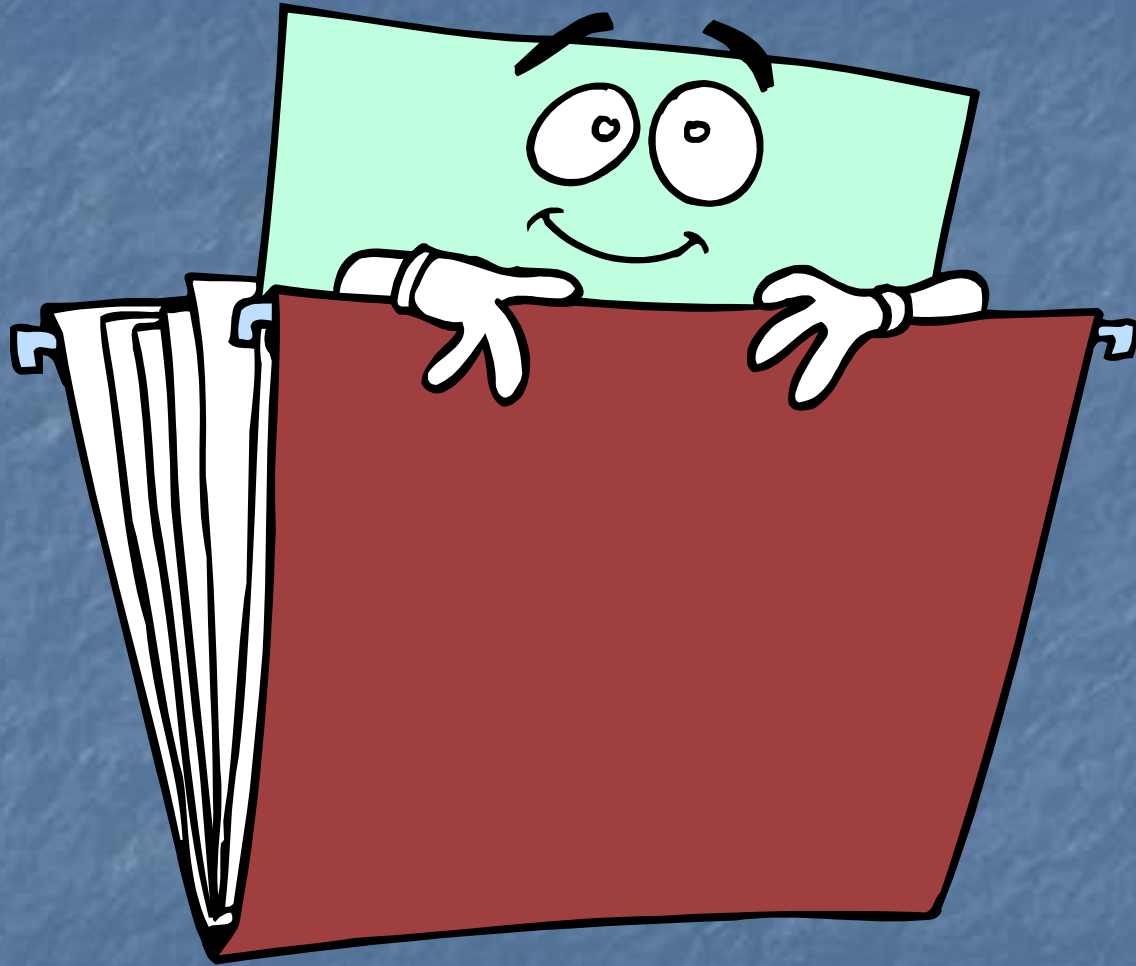
**City and County  
Commissioners**

**Property  
owners**

**Planners**



# What's in my folder?



<http://www.fws.gov/panamacity/species/Shoreline.html>



# Workshop Hosts



# Thank you

- Bay County
- BEST, Inc, & Friends of St. Andrew Bay
- EarthBalance
- Florida Department of Environmental Protection
- Gulf Coast Community College
- Mississippi State University and Mississippi-Alabama Sea Grant Consortium
- National Oceanic and Atmospheric Administration
- PBS&J
- U.S. Fish & Wildlife Service
- University of Florida Sea Grant Extension