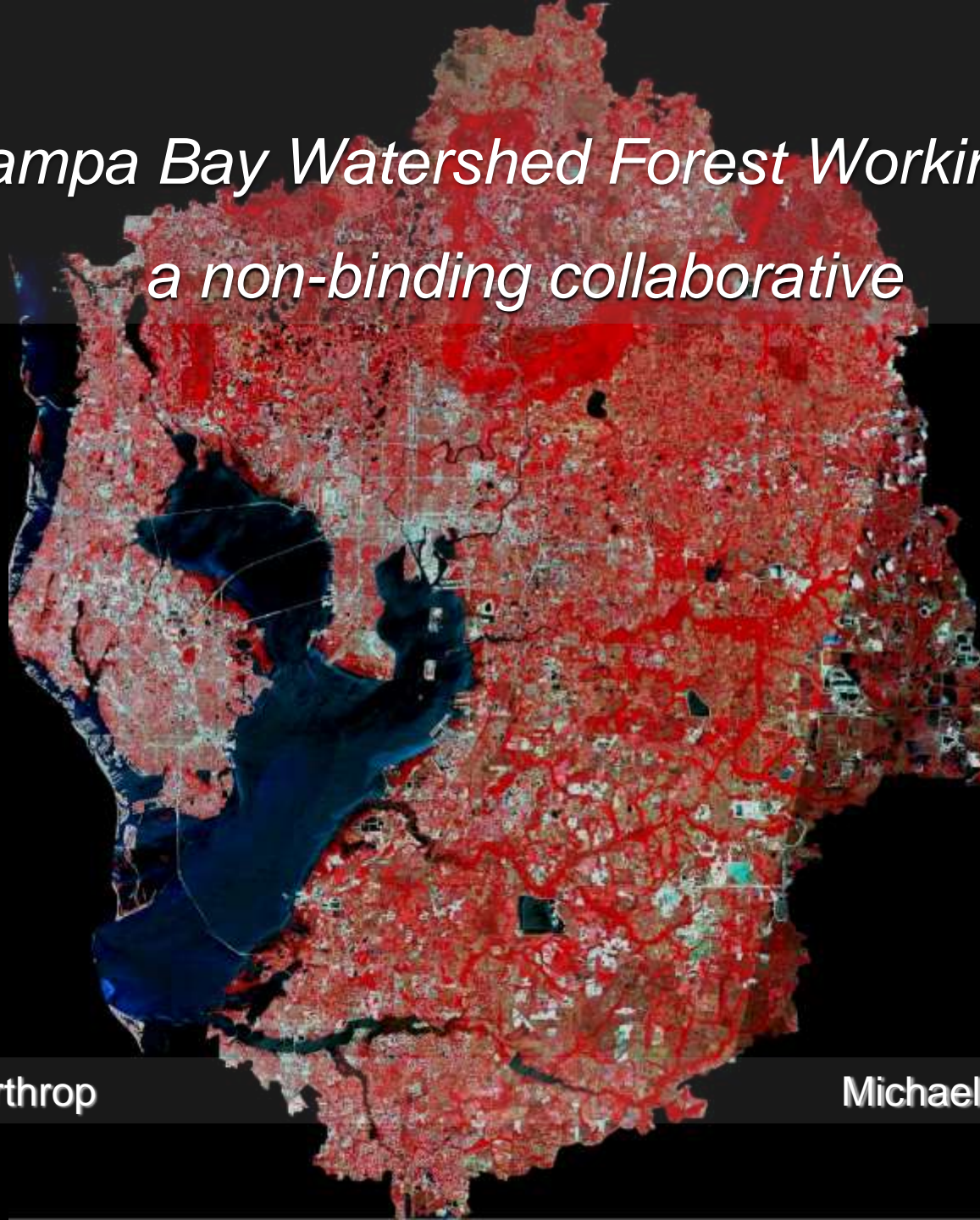


The Tampa Bay Watershed Forest Working Group

a non-binding collaborative

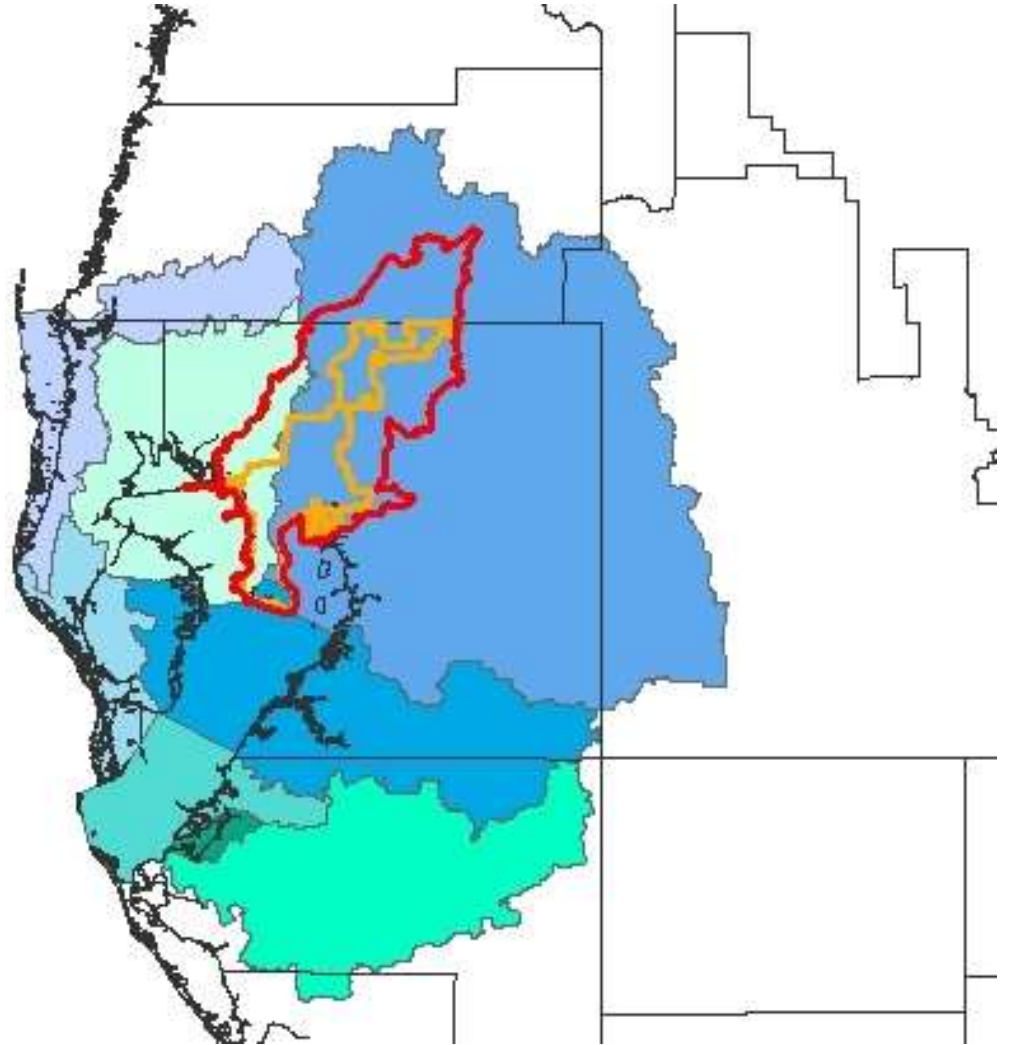


Robert Northrop

Michael Andreu, Ph.D.

Tampa Bay Watershed

- 6 counties
- ~1.4 million acres
- >2.4 million people



(Parsons 2007, Tampa Bay Estuary Program 2009)



Tampa 3rd largest City in FL

Tampa-St. Pete is largest metro area in Florida

**Top counties increasing in population:
Orange & Hillsborough Counties**

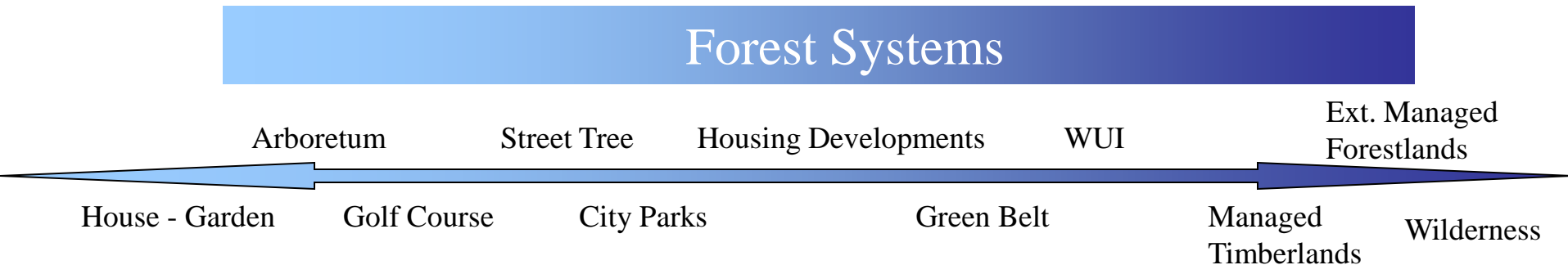
**Slowest population growth statewide:
Pinellas County
(Built Out!)**

(State of Florida.com 2010)
(Keen & Smith, UF News 2010)

An Increase in Population Growth =

- **Habitat fragmentation** (Zipperer 2002)
- **Increased impervious surface** (Zipperer 2002)
- **Disturbance patterns and processes altered** (Alberti 2008)
- **Location and assemblage of plants change** (Alberti 2008)
- **Functions and services altered**
(Band et al. 2005, Alberti 2008, Grimm et al. 2008, Vitousek et al. 2008)

Forest Continuum Paradigm



The Tampa Bay Watershed Forest Working Group

Mission: Create a scientific framework for the ecological assessment and sustainable management of the Tampa Bay watershed's trees and forested ecosystems along the urban – wildland continuum.



Mission

Create a scientific framework for the ecological assessment and sustainable management of the Tampa Bay watershed's trees and forested ecosystems along the urban – wildland continuum.

Goals

1. Understand the Tampa Bay watershed trees and forest as an ecological system.

The program brings together researchers from the biological, physical, and social sciences to collect new data and synthesize existing information on how both the ecological and engineered systems of Tampa Bay watershed work.

2. Understand how the Tampa Bay watershed trees and forest ecosystems change over long time periods.

3. Use the ecological knowledge created to help support educational and community-based activities.

Interactions between the project and the watershed's communities are an important component of the project. Such an integrative project includes many disciplines and many research and educational institutions, both in the watershed and beyond.

Preliminary objectives:

Assemble baseline information and analysis on the forest (including woodlands, and urban forests), within the Tampa Bay watershed boundaries to:

- Raise awareness of the ecological, economic, and social importance of Tampa Bay's watershed forests (education - private, professional, political).
- Understand and monitor the forest spatial distribution (past, present, future)
- Understand and monitor the forest species composition and condition.
- Quantify the value of forest to ecological, social and economic systems in the Tampa Bay Watershed.
- Determine the drivers to change in the forest systems.
- Determine the impacts of these changes to the forests (ecological, economic).
- Develop strategies for sustainable management and conservation of these forests.

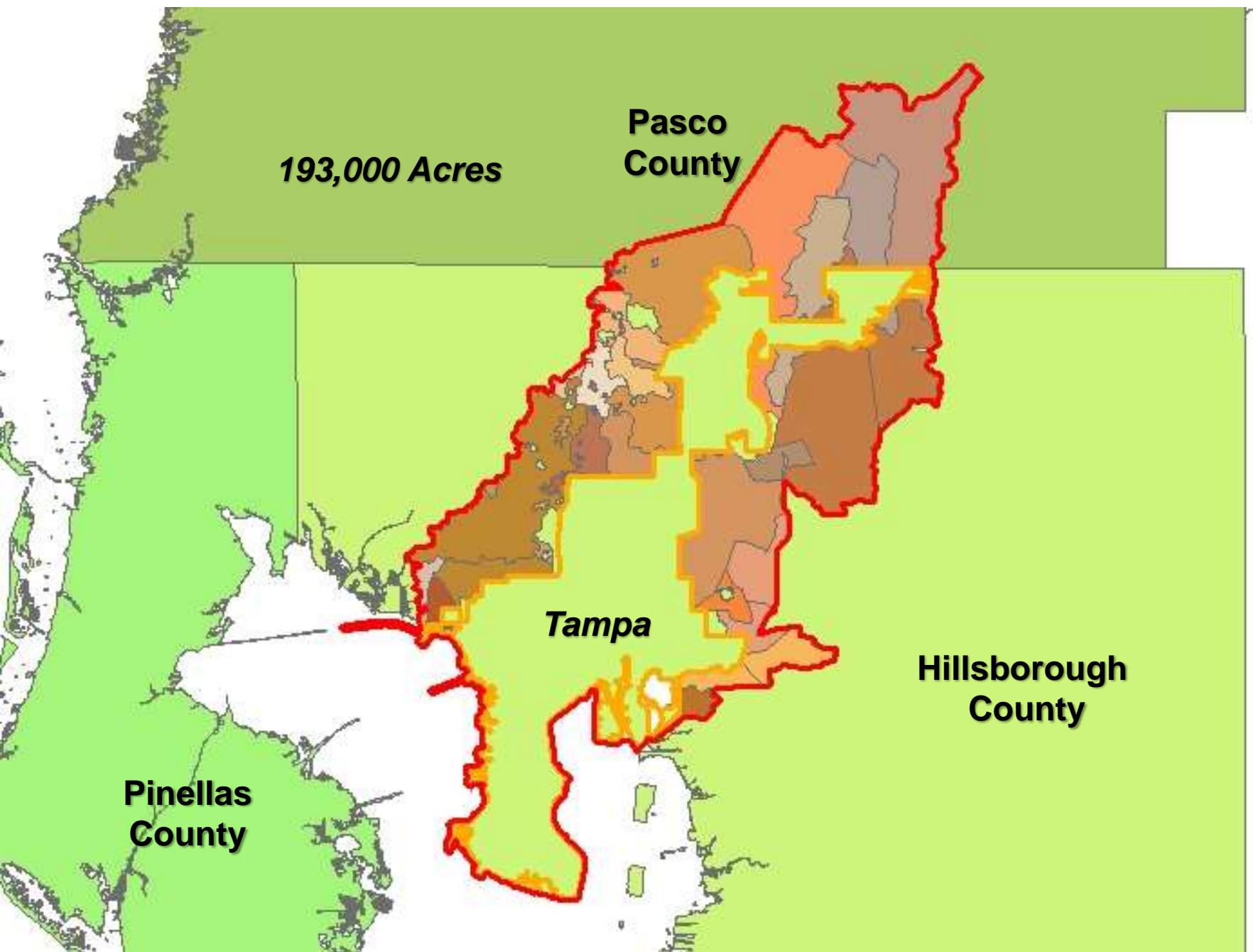
Ecological Analysis

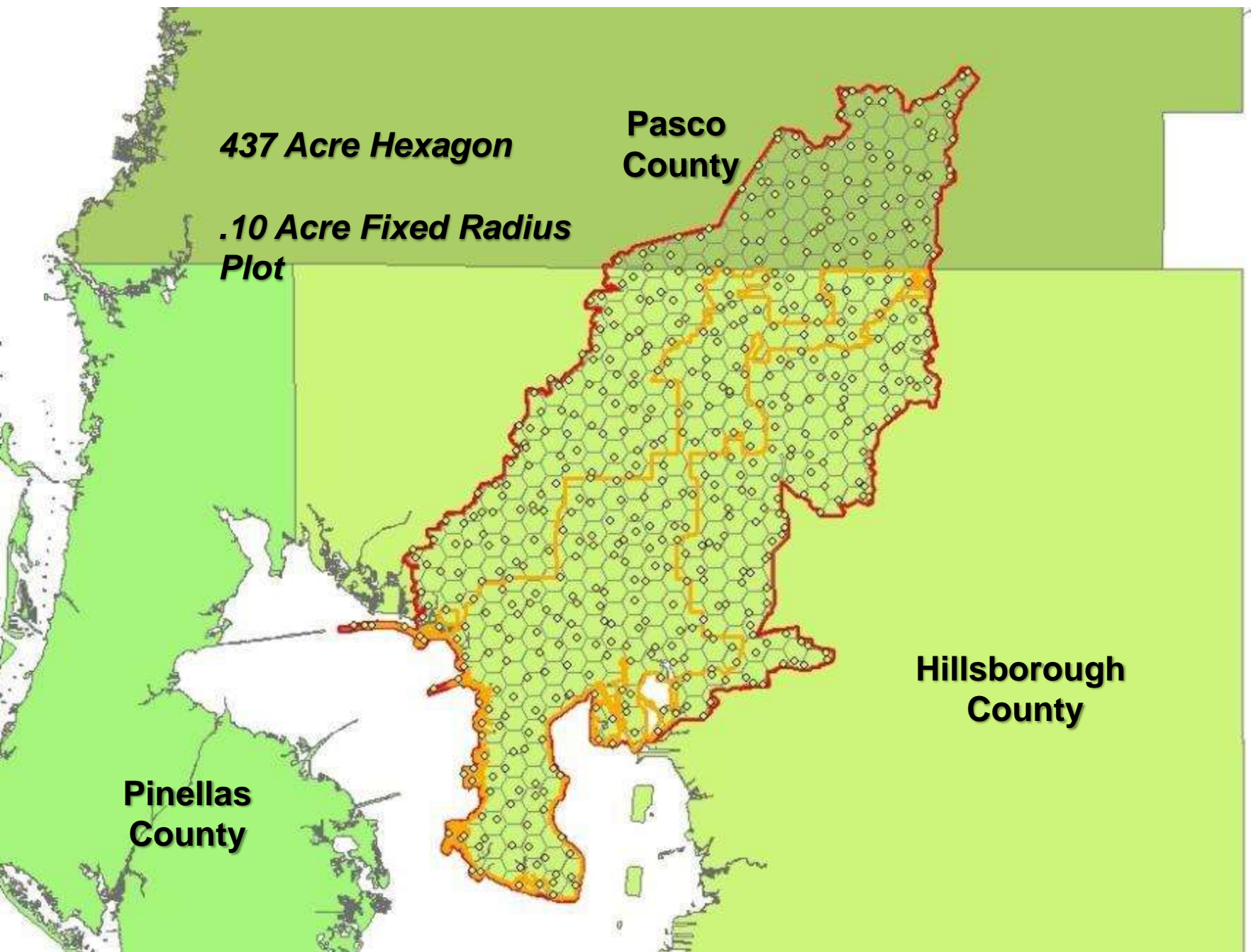
- Complete an updated & more thorough ecological analysis
- Estimate the ecological and economic benefits associated with the urban forest today.



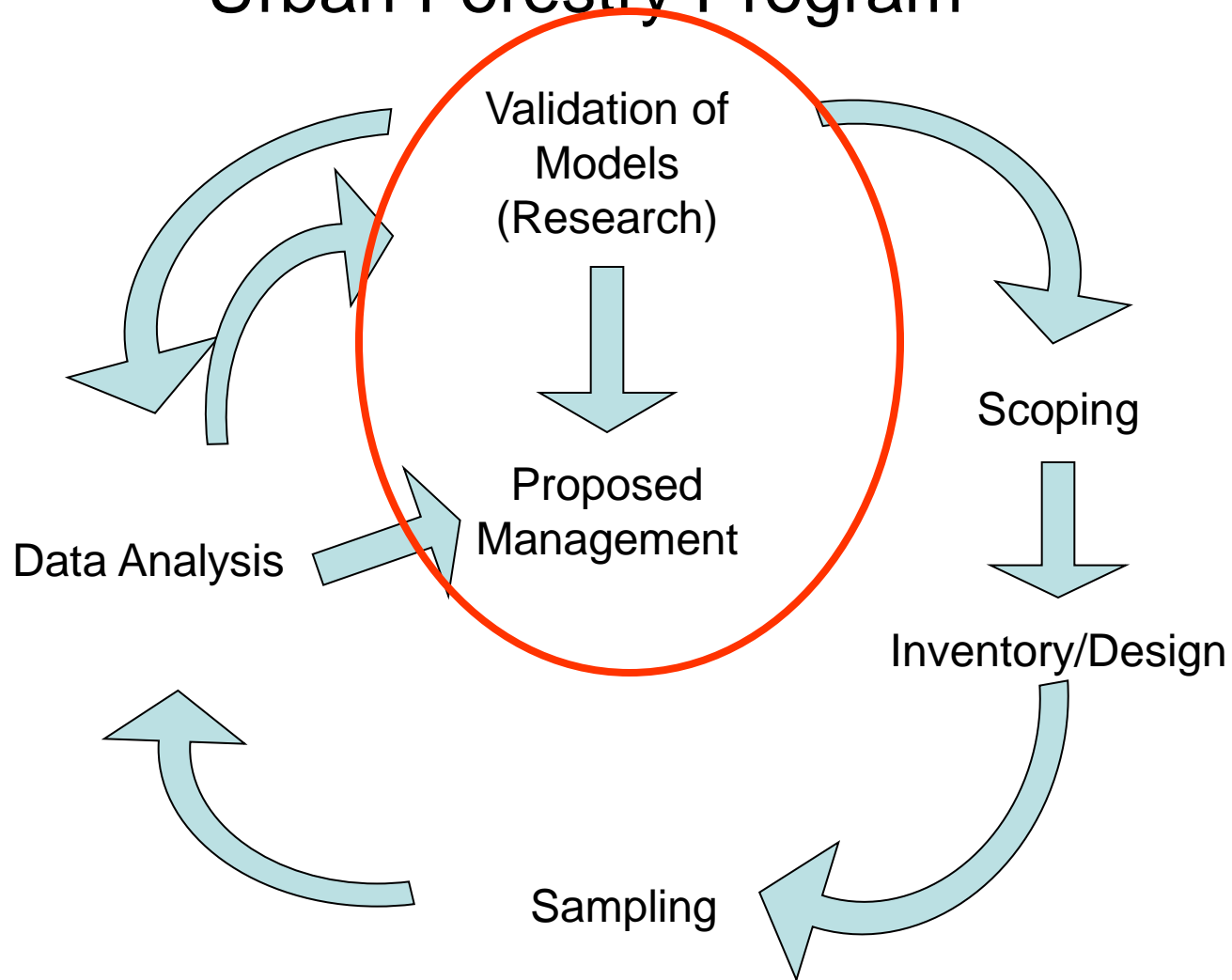
The most scientifically robust system available to describe the urban forest: Structure, Composition & Function







A Scientific Framework For Establishing an Urban Forestry Program



Providing Opportunities to Interact

Workshops

- Mayor's Symposium on Community Trees and the Urban Forest**
- Linking Forest to the Bay**

UF, USF, SWFWMD, Tampa Estuary Program, NRPS

- Incorporating Forest Ecosystem Services Into Land Use Planning**

TNC, USFS, MD DNR, UW, UF, USF

- Urban Forest Inventory and Analysis**

UF, FL DoF, USFS

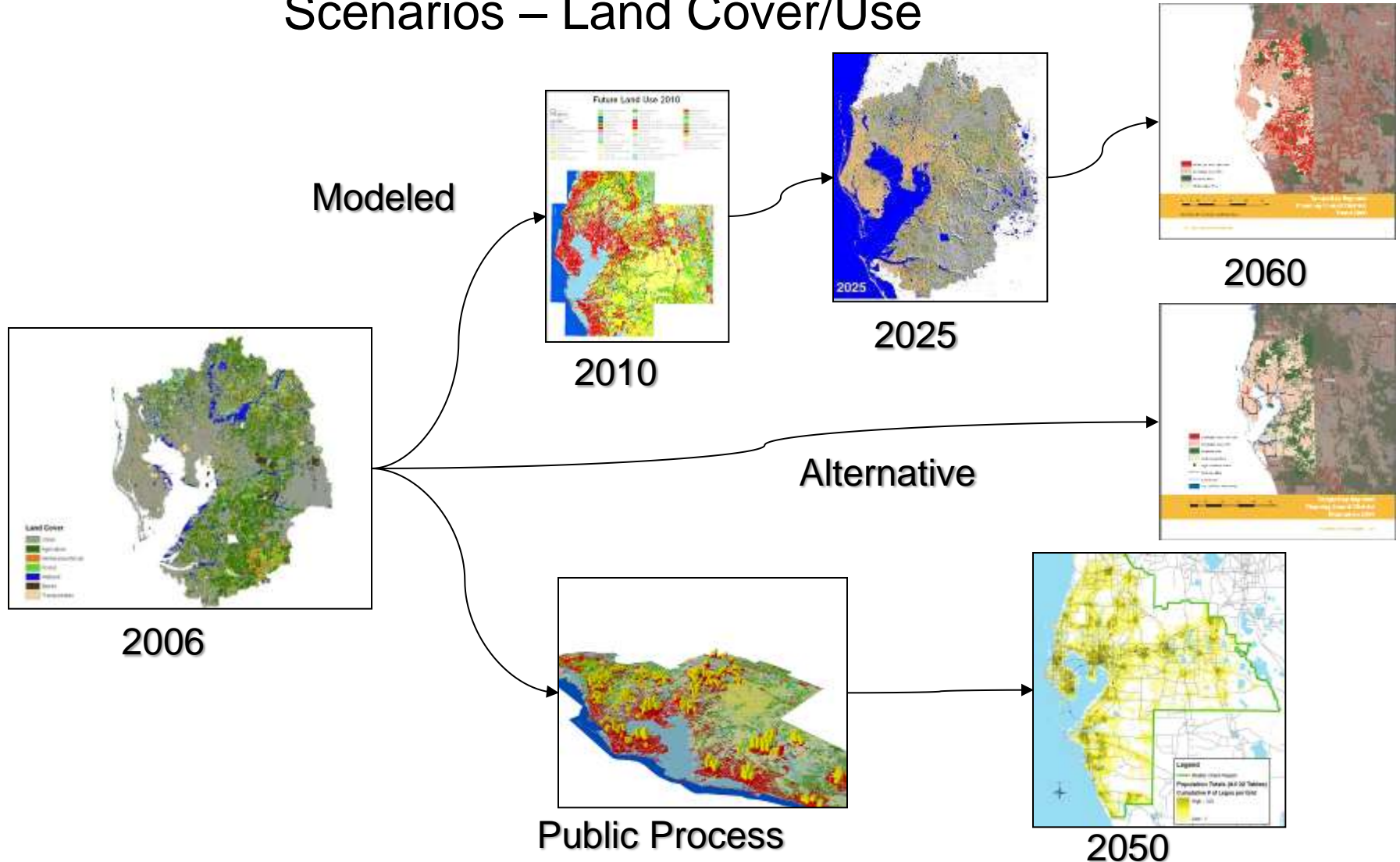
- Annual Science and Management eXchange**

Tampa Stormwater, Pinellas Pub Works, Lakeland Parks & Rec, USF,

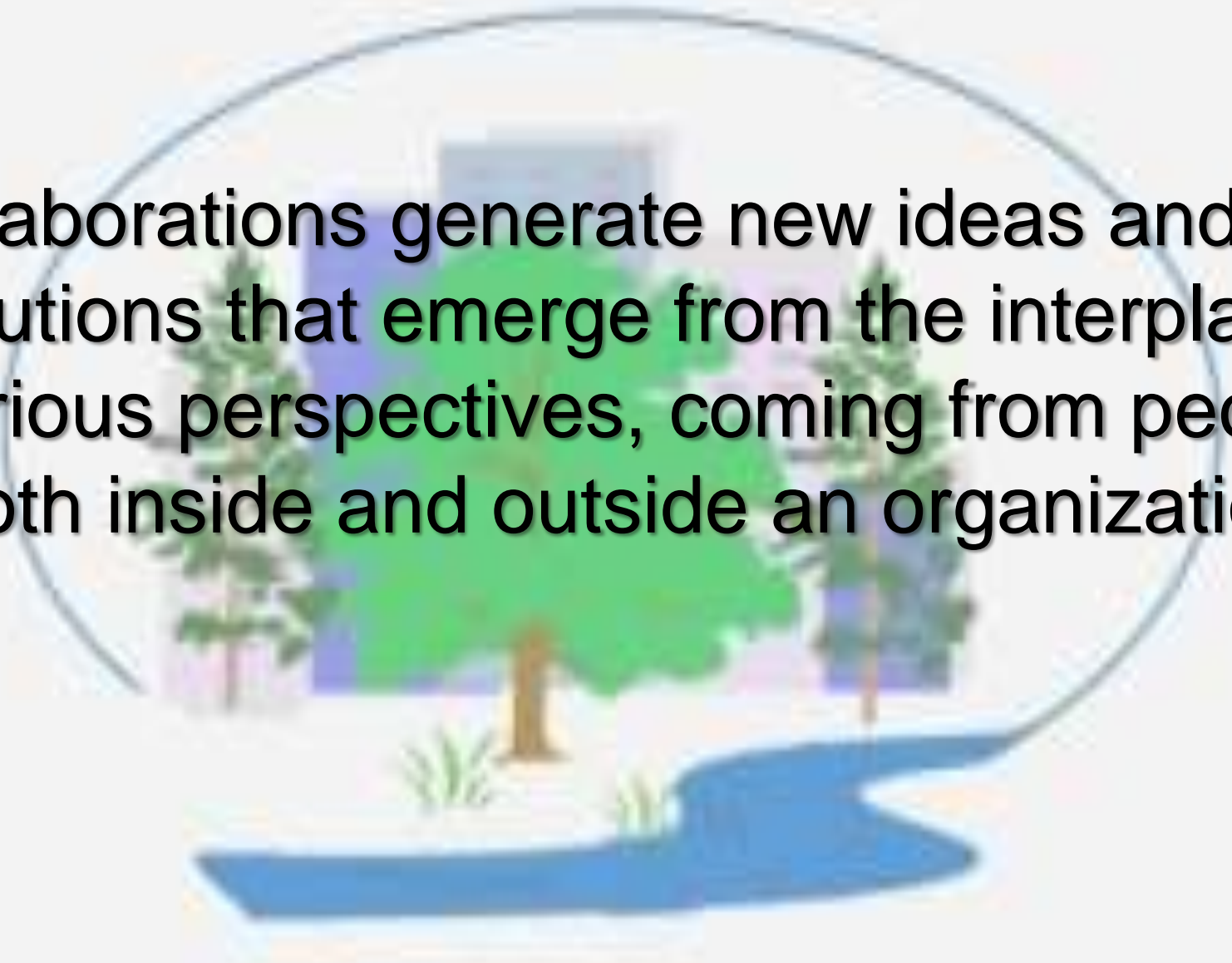
EPA, TNC, FL DOF, UF, USF, Clearwater Parks

New Partners Sharing Similar Goals – US EPA

Scenarios – Land Cover/Use



Collaborations generate new ideas and new solutions that emerge from the interplay of various perspectives, coming from people both inside and outside an organization.



Preliminary objectives:

Assemble baseline information and analysis on the forest (including woodlands, and urban forests), within the Tampa Bay watershed boundaries to:

- Raise awareness of the ecological, economic, and social importance of Tampa Bay's watershed forests (education - private, professional, political).
- Understand and monitor the forest spatial distribution (past, present, future)
- Understand and monitor the forest species composition and condition.
- Quantify the value of forest to ecological, social and economic systems in the Tampa Bay Watershed.
- Determine the drivers to change in the forest systems.
- Determine the impacts of these changes to the forests (ecological, economic).
- **Develop strategies for sustainable management and conservation of these forests.**

Preliminary objective

- Develop strategies for sustainable management and conservation of these forests.

Steps

1. Statement concerning the future desired condition of forest lands within the watershed.
2. Explicitly stated shared goals with measurable objectives

Outcomes, Observations and Lessons Learned



Building a Collaborative is Building a Community

A topic that members care about

A community coordinator who can orchestrate activities and opportunities for learning

Regular social activities to build trust and new social connections

Opportunities to gain experience, or vicariously gain experience by hearing the stories of other practitioners

A core group of community members that provide direction and enthusiasm

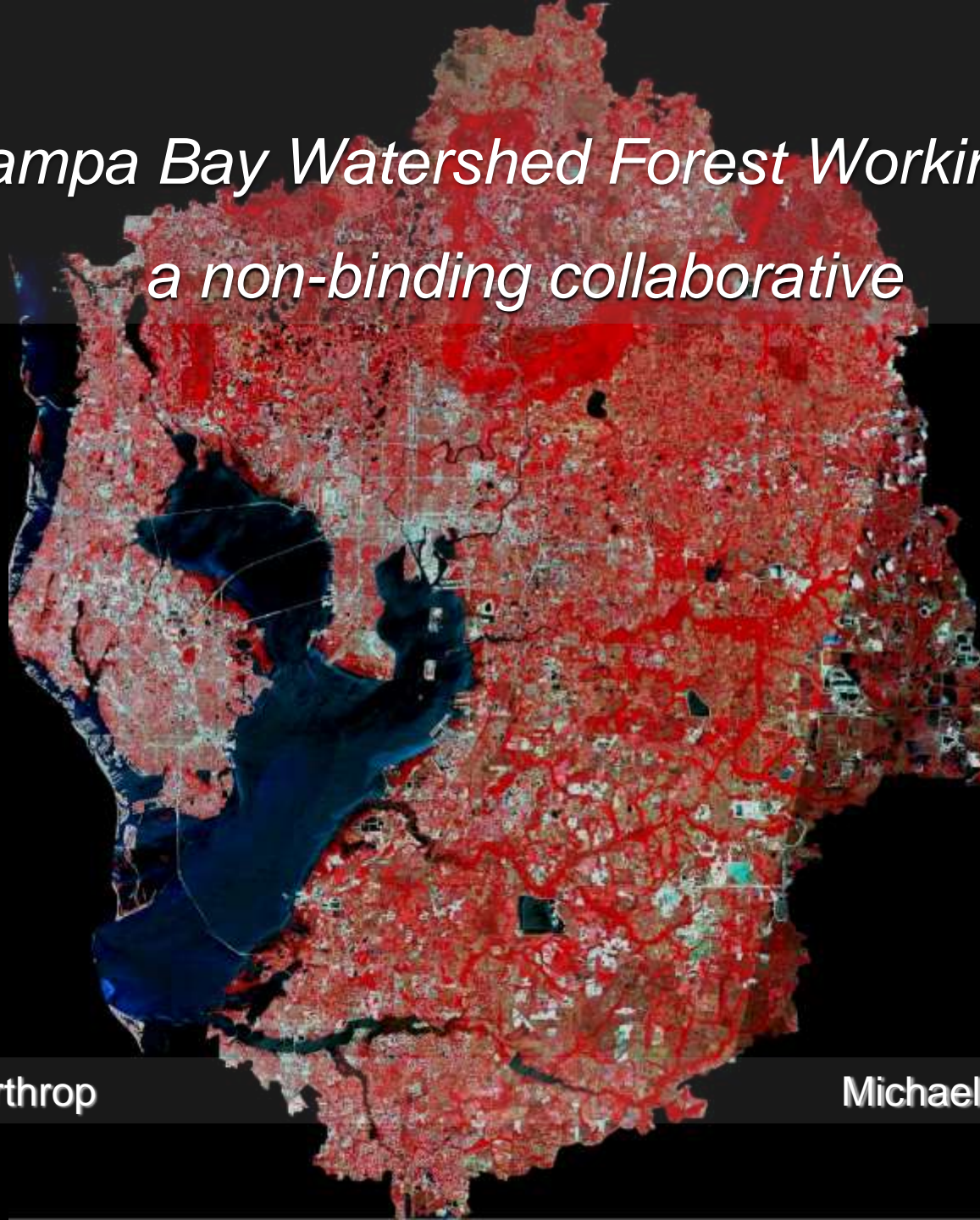
Regular meetings to help establish the community's rhythm

Appreciation for the periphery, which may be silent but is learning and carrying community learning's out to the world

Members who belong to related communities, who bring in and take out ideas and information (pollinators and connectors).

The Tampa Bay Watershed Forest Working Group

a non-binding collaborative



Robert Northrop

Michael Andreu, Ph.D.