

# Assessing Coastal Resiliency in Pinellas County, Florida



**LIBBY CARNAHAN**  
UF IFAS PINELLAS COUNTY  
SEA GRANT EXTENSION AGENT

**RAMONA MADHOSINGH-HECTOR**  
UF IFAS PINELLAS COUNTY  
URBAN SUSTAINABILITY EXTENSION AGENT



# Presentation Outline



- Objectives
- Stakeholders
- Steps and Timelines
- Accomplishments and Next Steps
- NRLI Tools



# Pinellas County



- 1 of 35 Coastal Counties
- Peninsula
  - Gulf of Mexico
  - Tampa Bay
- 6<sup>th</sup> most Populous
  - 921,000 Residents
- Seasonal Residents
- 24 Different Municipalities



# Tropical Storm Debby



- June 2012
- Strong Winds
- Rain
- Moderate Storm Surge



- Impacts
  - Coastal Flooding
  - Beach Erosion



# Goals and Objectives



- Assess disaster preparedness of coastal communities
- Increase knowledge about community resiliency
- Provide relevant and timely research-based information
- Build capacity to address community resiliency
- **Highlight UF/IFAS Extension as a resource**

# Stakeholders



- Common Challenges
- Diverse Communities
  - Gulf of Mexico, BIG-C
  - Tampa Bay

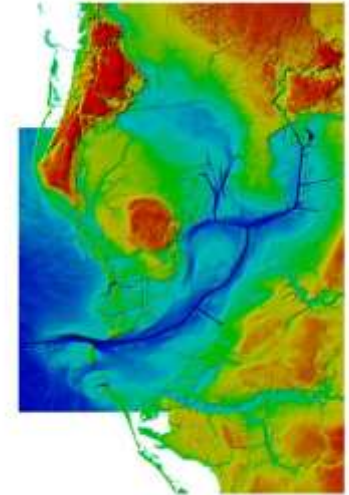
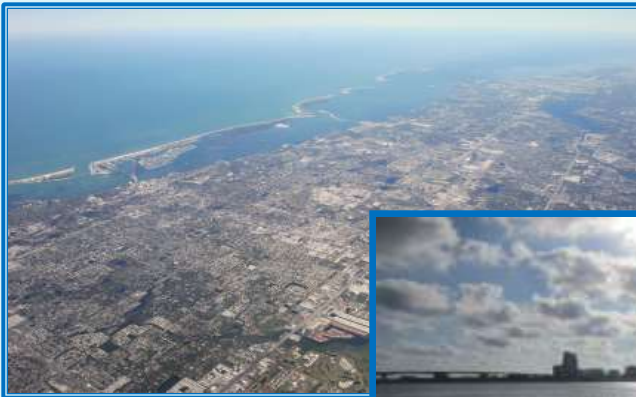


Figure 3. Topographic map showing the Tampa Bay watershed and surrounding land.





# Stakeholders



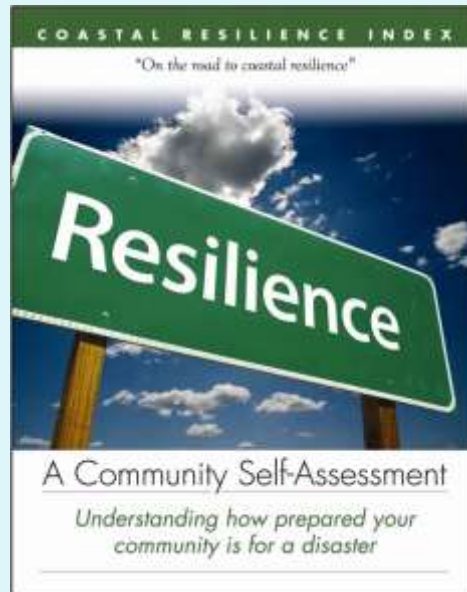
- It's all about who you invite
  - City Managers
  - Emergency Management
  - Planning
  - Fire & Response Services



# CRI Tool



- Set Benchmark Storm Condition
- Answer Yes/No Questions



Critical Infrastructure and Facilities

Transportation

Community Plans and Agreements

Mitigation Measures

Business Plans

Social Systems



# Methodology



- BIG-C Meeting
- Meet with Pinellas County Emergency Management
- Electronic mail blast!

December 2012

January 2013

- Response deadline
- Clearwater
- Safety Harbor
- PC Emergency Intern

- Treasure Island
- Distribute customized CRI reports
- Contact Chamber Commerce/large retail stores

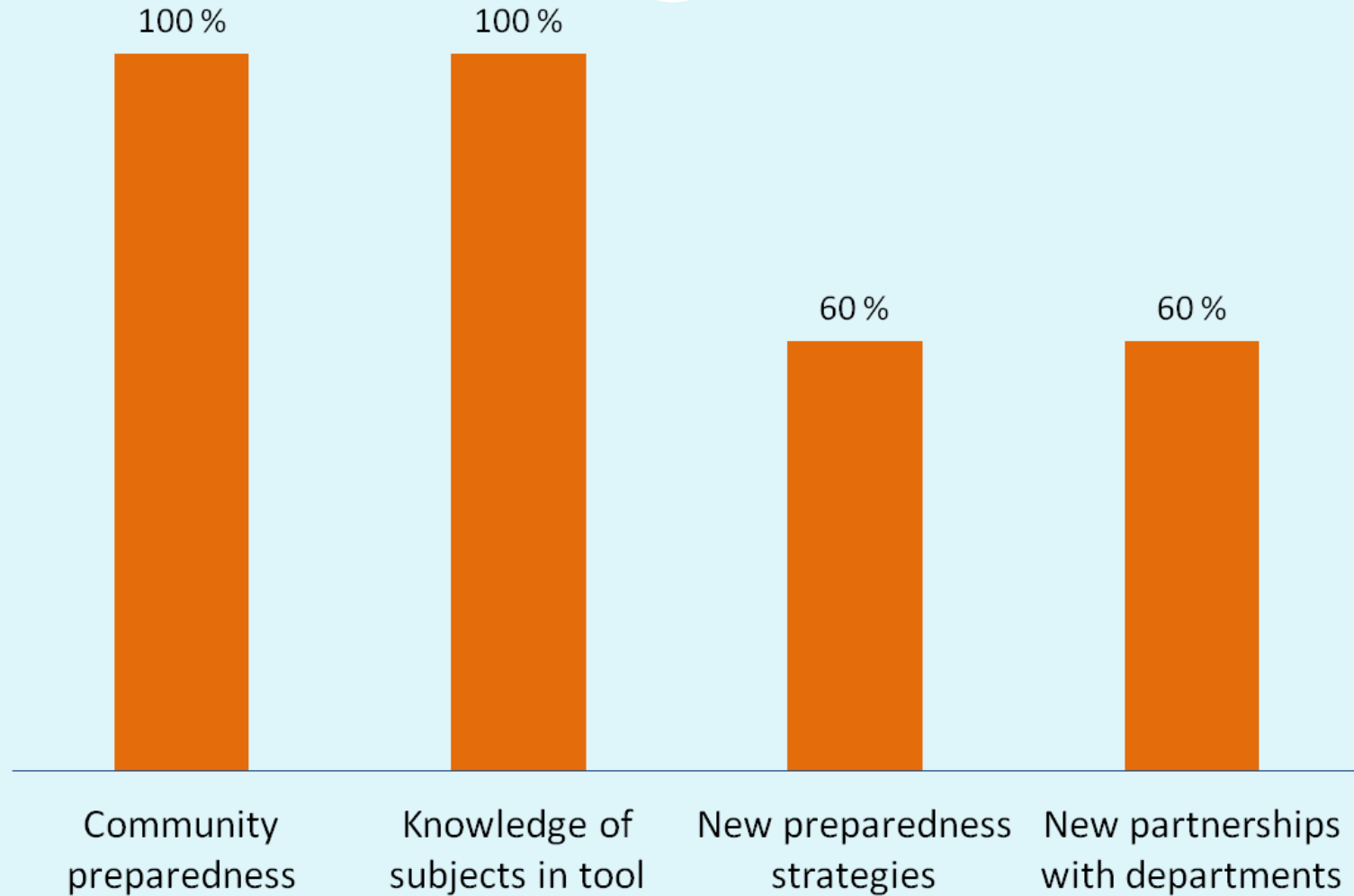
February 2013

March 2013

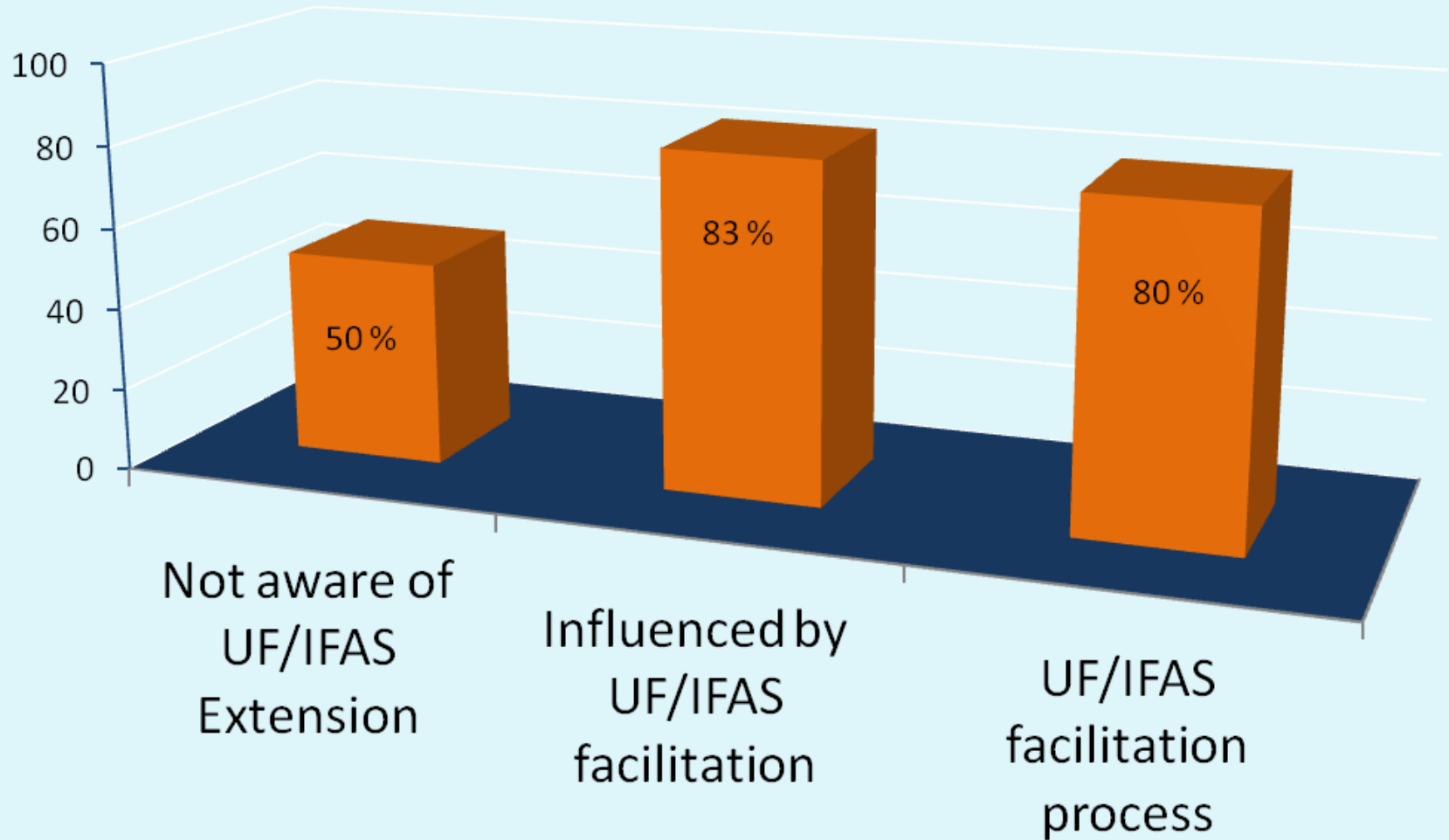
- Pinellas County
- Follow up with businesses
- Distribute customized CRI reports
- Online evaluation



# The Results are In!



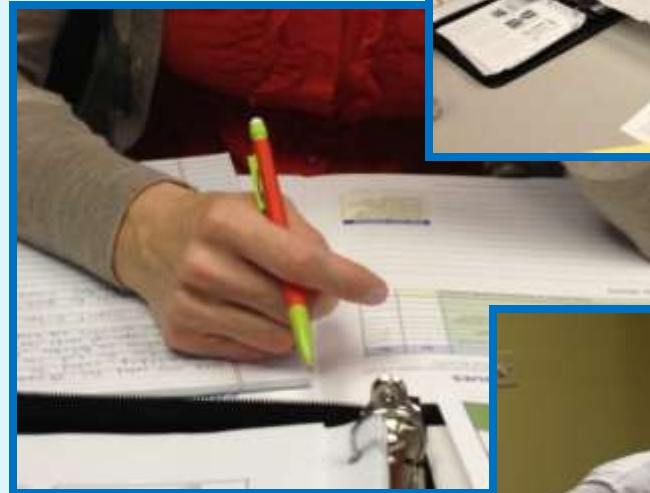
# Visibility of UF/IFAS Extension



# NRLI Keys to Success



- Preparation
- Eliminate Turf War
- Time Management
- Identify/Validate Stakeholder Needs



# Conclusions



- Communities well prepared for disaster
- CRI is one tool in the toolkit
- No substitute for regular planning and partnerships
- Education and funding continue to be critical needs when promoting long-term resiliency

# Next Steps



- Build closer working relationship with Pinellas County Emergency Management
- Attend Barrier Island Summit in April 2013
- Develop and host workshops for coastal community constituents *e.g.* living shorelines, mitigation measures
- Conduct 1-year follow up



# Acknowledgements



- Florida Sea Grant
- UF/IFAS Extension Professional Development Mini-Grant
- Mary Campbell, Pinellas County Extension Director
- Dr. Charlie Vavrina, So Central District Extension Director
- The NRLI Project Team and NRLI Fellows

