

Nassau Sound Wildlife Conservation:

Imperiled Species & Multiple Users In Limited Habitats



Terry J. Doonan, Ph.D.

Goal

Healthy beach systems in Nassau Sound with thriving native wildlife while balancing a diversity of human uses



Nassau Sound

Big Talbot Is.
State Park

Amelia Is. State Park

The Bird Islands

Little Talbot Is.
State Park



Situation Assessment

- Beaches are important habitats for many wildlife species
- Beaches are heavily used for recreation by people
- Wildlife occupying beach habitats are impacted by various activities
- Conflicts occur



Ft. Clinch State Park

Perspective

Wildlife Habitat



NOT Wildlife Habitat



Perspective II

Very cool wildlife



Black skimmer

Wild life?



Nassau Sound is a Critical Resource for Wildlife

- For nesting shorebirds and seabirds



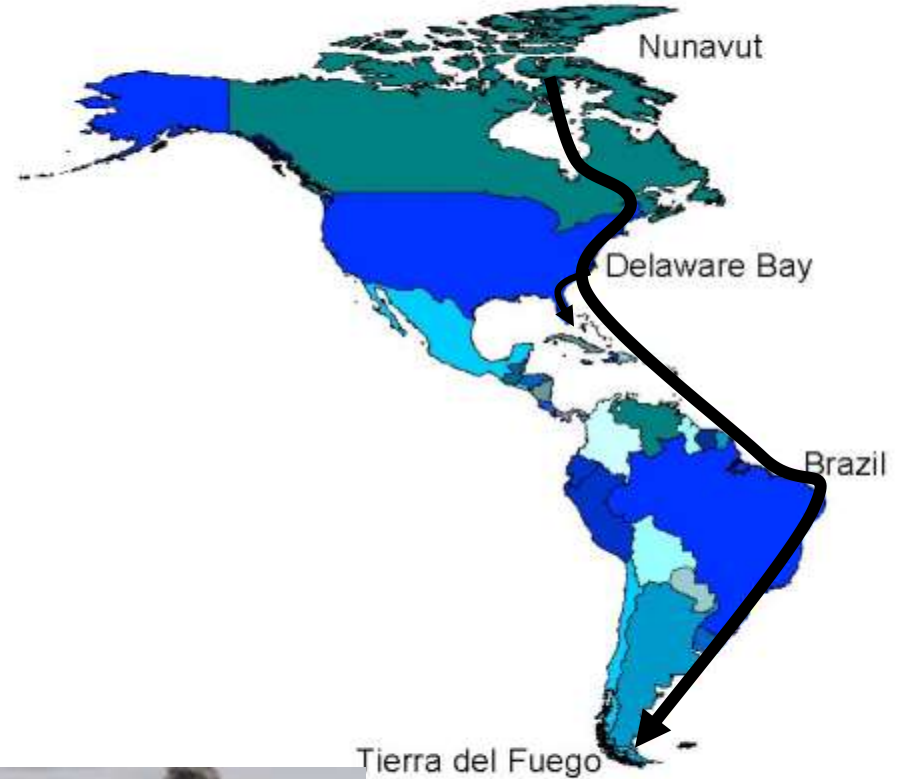
Nassau Sound is a Critical Resource for Wildlife

- For Wintering & Migrating Shorebirds



Red knot, *Calidris canutus*
Breeding, migration, and wintering grounds

Breeding Area



Wintering Area



Practicum Objectives

- Achieve wildlife the conservation goal for Nassau Sound through an effective management process:
 - Work with partners
 - Involve stakeholders
 - Identify interactions
 - Address important impacts



Nassau Sound Management Process

- Work with partners to develop a management agreement (MOU) for Nassau Sound
- Work with FWC staff to revise policies and protocols for Critical Wildlife Areas (CWAs)
- Complete 'Human Dimensions' training
- Identify stakeholders and develop a stakeholder advisory panel
- Work with stakeholders to develop a management plan for Nassau Sound



Partners

- DEP – Florida Park Service
- DEP – Coastal and Aquatic Managed Areas
(aquatic preserves)
- Florida Audubon
- Florida Fish & Wildlife Conservation Commission



Who are the Stakeholders?

Stakeholder – Any person who will be affected by, or will affect, wildlife or wildlife management.

- perceive significant issues; willing to engage
- able to engage effectively; some ‘authority’

Stakes – Stakeholders can have any of multiple interests, which may be generally categorized as recreational, cultural, social, political, economic, or involve health & safety.

Managers – A class of stakeholders; subject matter experts.



Stakeholders

Anglers



Beachgoers



Birders



Boaters



Stakeholders?



Interactions & Conflict

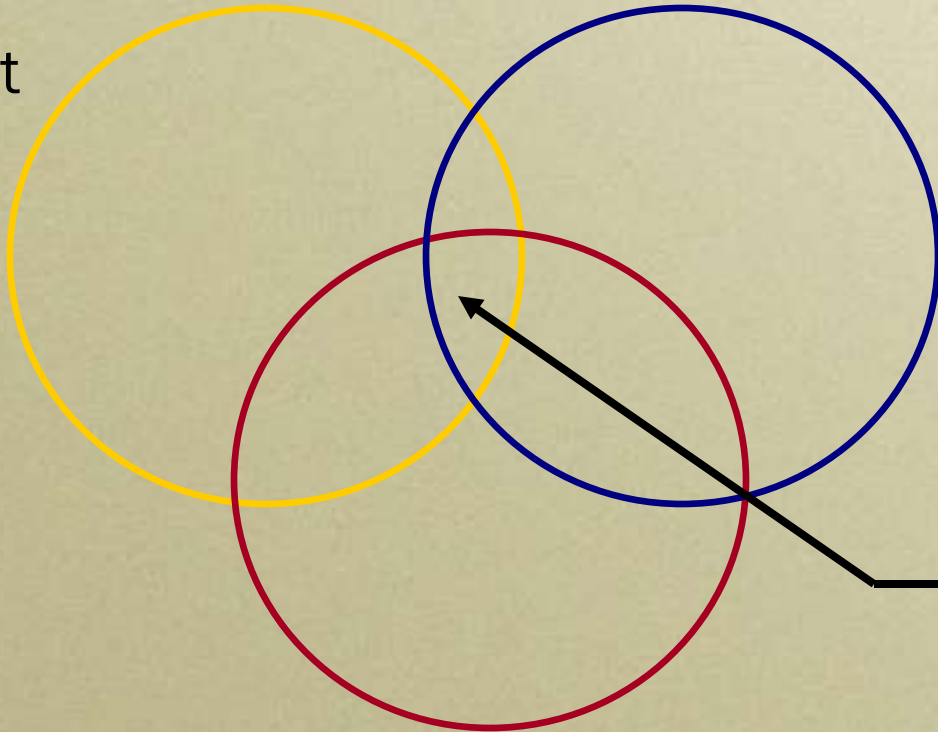
Resource
management
agencies
(partners)

Environmental
conservation
advocates
(partners;
stakeholders)

Recreational & other
resource users
(stakeholders)

Interactions
(Conflict !)

(Effects → Impacts)



Some Sources Of Impacts

Loss and Degradation of Habitat



Perdido Key



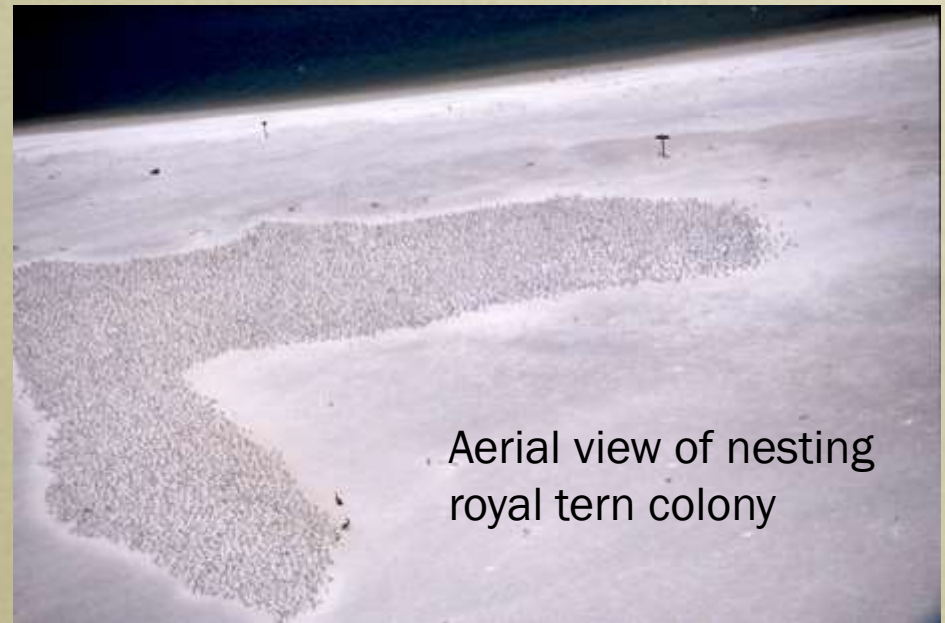
Storms – Little Talbot Is.



Disturbance by people – Little Bird Is.

Action: Developing a Management Agreement

- Held meetings among partners
- Developed draft MOU
- Revisions currently in process



Action: Revising the CWA Program

- Leading a team of staff from across FWC to develop recommendations
- Prepare initial ideas on what is seen as necessary
- Involve stakeholders and partners
- Currently in process



Action: Re-establishing the CWA

- CWAs are FWC-established management areas
 - Established under rule 68A-19.005 FAC
- To prevent disturbance to important wildlife populations
- Sites within CWAs can be closed to access
- Considered a key to effective management in Nassau Sound



Action: Develop a Stakeholder Engagement Plan

- Learn 'Human Dimensions' approach to stakeholder involvement
- Identify stakeholders willing to engage
- Contact stakeholders and determine representatives
- Establish a stakeholder panel
- Develop a management plan to address stakeholder-identified impacts
- Initial stages

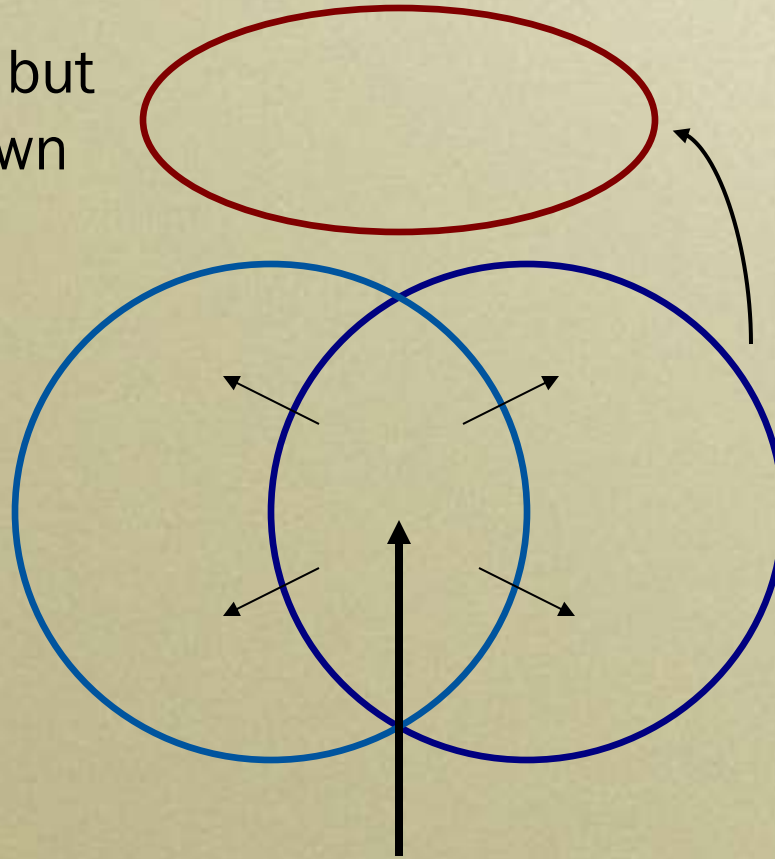


Developing the Stakeholder Panel

Stakeholders who should be involved, but aren't or are unknown

Stakeholders who want to participate

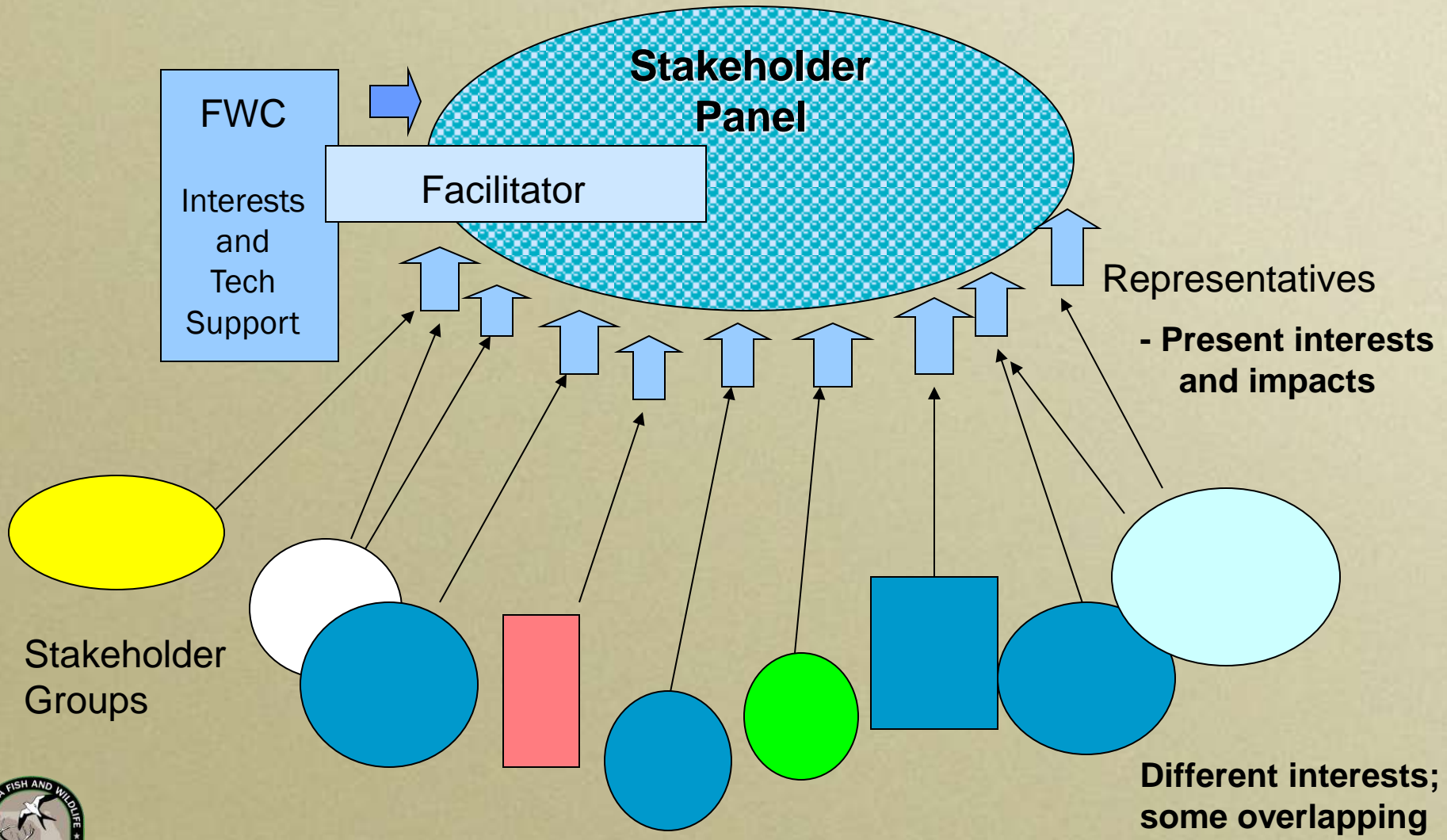
Stakeholders we want involved



Focus on these stakeholders or stakeholder representatives



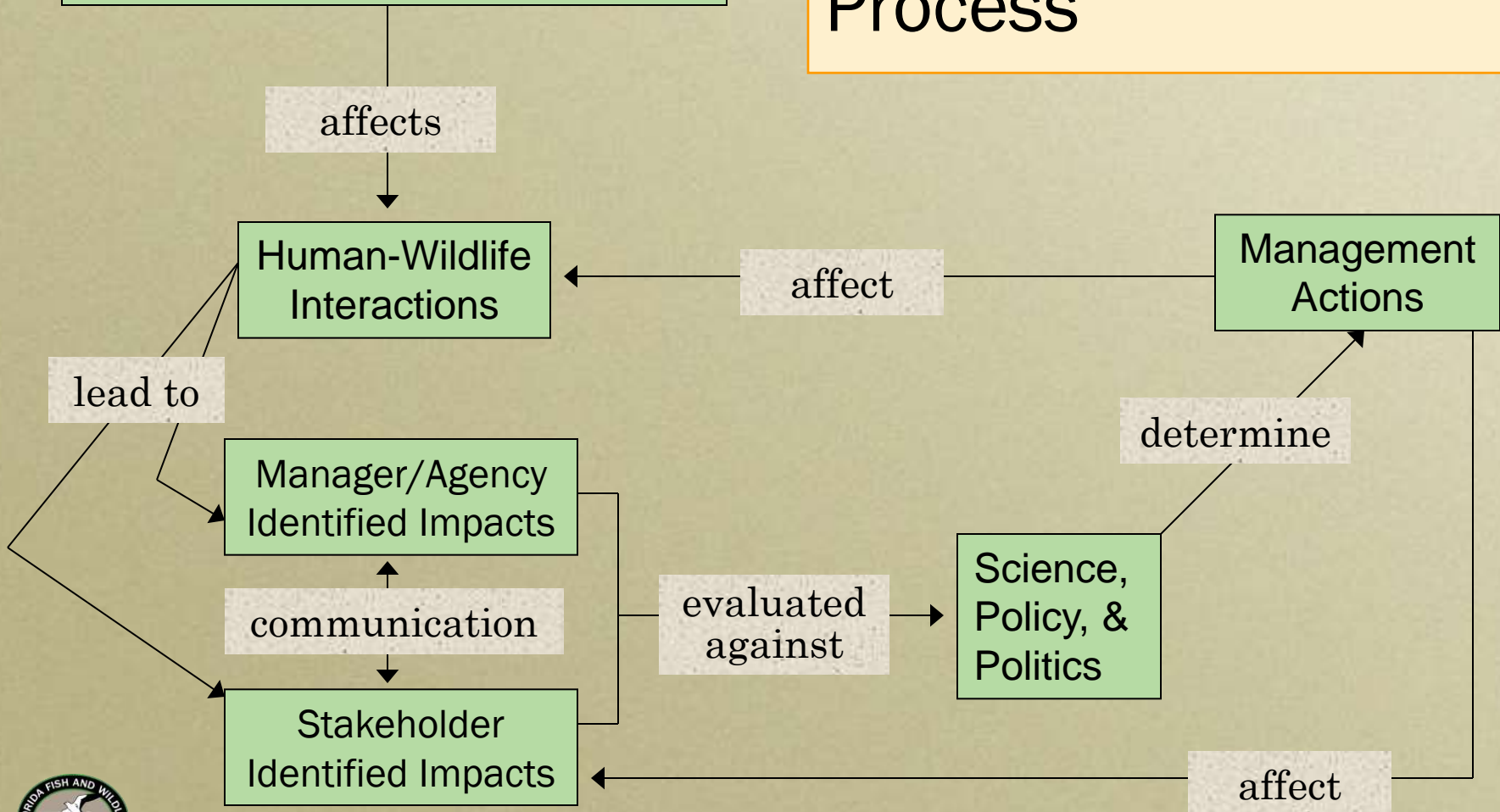
Stakeholder Panel Structure



Desired Future Condition (Goal)

Healthy beach systems in Nassau Sound with thriving native wildlife while balancing a diversity of human uses.

Action: Develop an Effective Management Process



Lessons Learned

- Involving stakeholders in management plan development will produce more robust results
- Having ‘expert’ information will not, by itself, lead to a robust solution
- Developing both partnerships and stakeholder involvement will promote more effective conservation



Lessons Learned

- Interactions may be perceived differently by different stakeholders
- Providing stakeholders 'ownership' in the management process increases the opportunity for acceptance



Thank You

Many of the photos included here
are courtesy of Pat Leary