

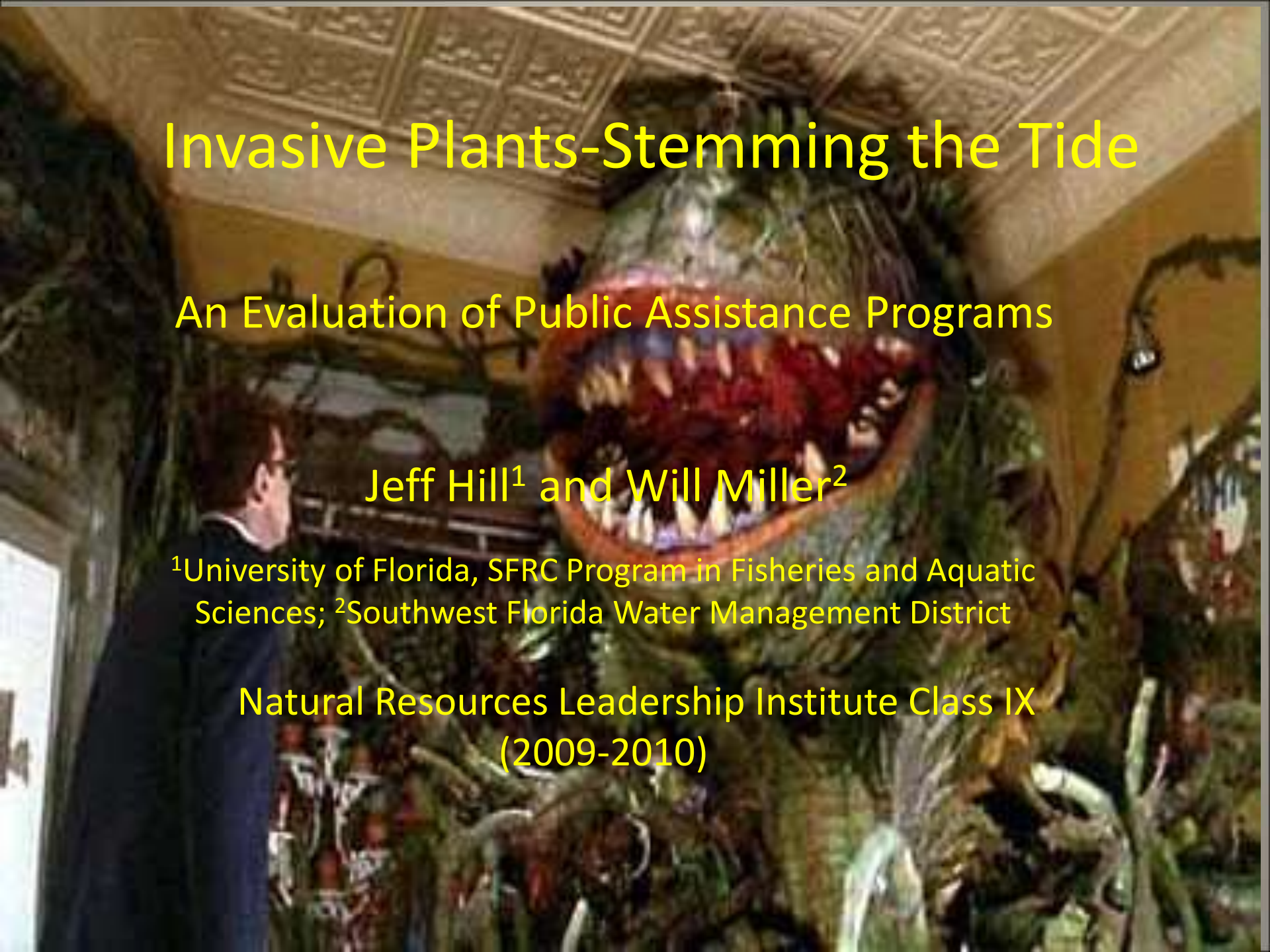
Invasive Plants-Stemming the Tide

An Evaluation of Public Assistance Programs

Jeff Hill¹ and Will Miller²

¹University of Florida, SFRC Program in Fisheries and Aquatic Sciences; ²Southwest Florida Water Management District

Natural Resources Leadership Institute Class IX
(2009-2010)



Current Situation

- 1.5 million acres infested
- Over \$50,000,000 annually by State Agencies
- Does not count private monies

Need

- Many public and conservation lands have invasive plant management
- Invasive plants on private property *a source of seeds and propagules* for public and conservation lands
- Private landowners often lack knowledge of problem, technical expertise, equipment, and funds to manage invasive plants

Resource



<http://www.floridainvasives.org/>

- Collaboration of agencies and NGOs
- Supported by The Nature Conservancy and U.S. Fish and Wildlife Service
- Searchable database of assistance programs for invasive species management

Assistance Programs

- 28 programs listed
- 14 federal, 2 state-federal, 1 county-federal, 1 state, 4 county, and 6 NGO
 - More interconnectedness than implied by discrete categories and more state involvement
- Most directly apply to invasive plants
- Remainder indirectly apply to invasive plants
 - Control of invasive plants funded to protect and conserve habitats or imperiled species
 - Management to control pine bark beetles

Assistance Program Information

- Agency/affiliation
- Geographic coverage
- Funding criteria
- Target invasive species
- Contact information
- Application information



Program Contacts

- All Program Contacts emailed
- Asked for information on:
 - Total funding level, numbers of projects, funding for the projects, and landowner type
 - For Florida if multi-state
- 6 Programs have provided information (21%)
- 3 others responded and will provide information in the near future (11%)
- Follow-up contacts are planned for other Programs

Evaluation Tool



- Surveys with Assistance from the
- Florida Cattleman's Association
 - Florida Farm Bureau

Florida Regions



North

Central

South

200 surveys were sent via email

- Questions designed to determine;
 - Types of agricultural involvement
 - Ongoing invasive species efforts
 - Plant species targeted
 - Awareness of assistance programs
 - Participation
 - Agency administering programs
 - How they became aware of programs
 - Suggested Improvements

- 36 returned completed (18%)



Agricultural Enterprises

- Citrus
- Sod
- Row crops
- Ornamentals
- Cattle
- Forest products

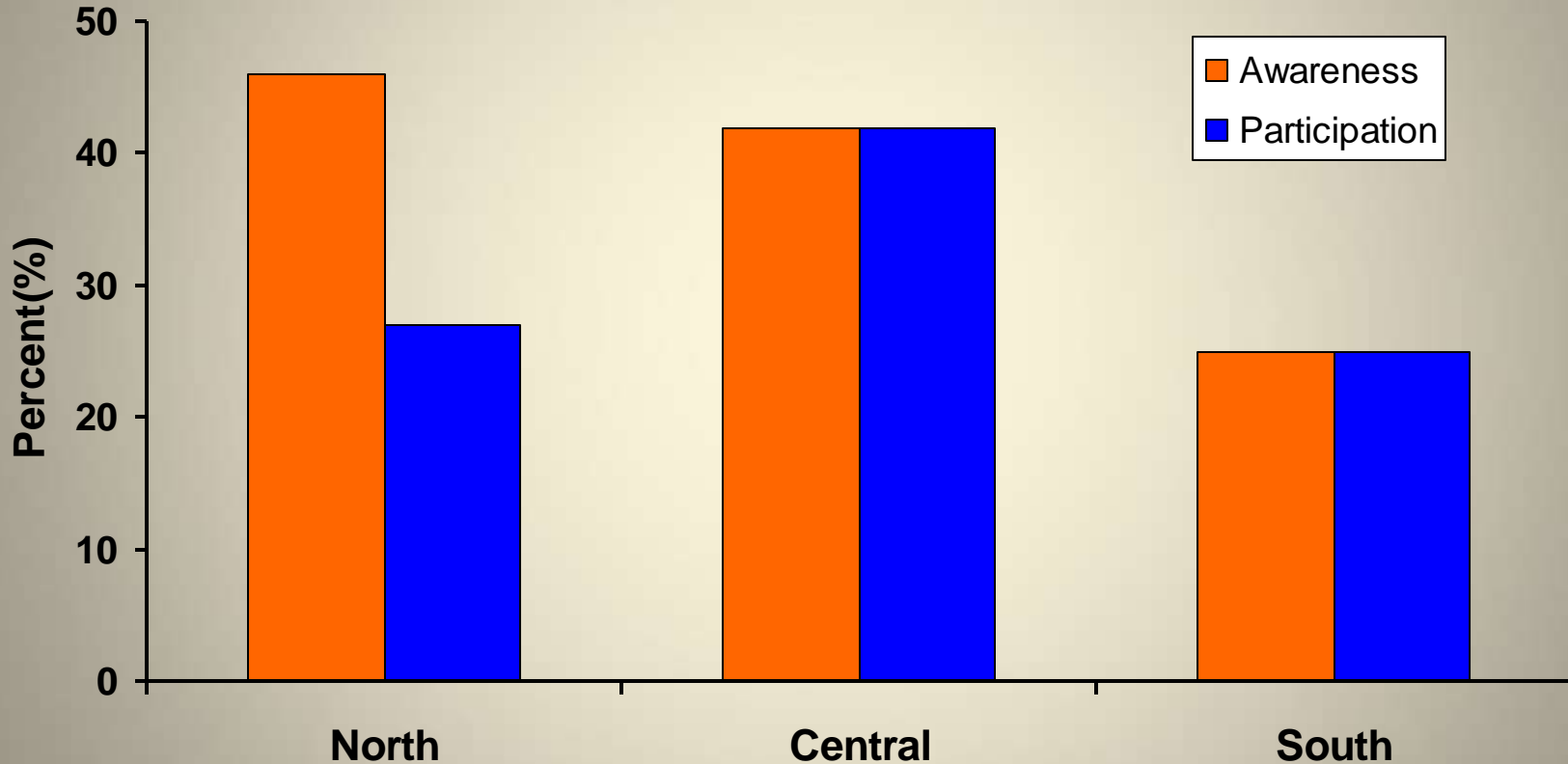


93 % of Respondents have Ongoing Control Programs

- Invasive Species Targeted
 - Cogon grass
 - Tropical soda apple
 - Air potato
 - Climbing fern
 - Brazilian pepper
 - Melaluca



Awareness and Participation



Observations

- Northern region has the greatest disparity between awareness and participation
- If producers are aware of programs, they are likely to participate



Suggestions for Improvement

- Improved cost share
- Improved technical assistance
- Improved access to specialized equipment



Dissemination of Results

- Florida Forest Stewardship Program—UF/IFAS Extension
 - http://www.sfrc.ufl.edu/Extension/florida_forestry_information/index.html
- Florida Invasive Species Partnership (FISP)
- Assistance Program Contacts
- Florida Cattleman's Association
- Florida Farm Bureau

Acknowledgments

- Florida Cattleman's Association
- Florida Farm Bureau (Staci Braswell!)
- Florida Invasive Species Partnership (FISP)
- Assistance Program Contacts
- Chris Demers, Florida Forest Stewardship Program
- Ken Langeland, UF/IFAS Center for Aquatic and Invasive Plants
- Natural Resources Leadership Institute program team—Bruce, Burl, Candy, Jon, Laila, and Marta!