

A Look Into Crop Budgets

Class XVII Fellows:

Rachael Smith

Rebecca Elliott

Tara Wade



Issue Summary

Background

Agricultural best management practices (BMPs) are essential to mitigate agriculture's potentially negative effect on the environment and improve water quality.

Public benefits

- Sustained or improved water quality
- Reduced soil erosion
- Increased water conservation
- Increased wildlife habitat

Issue Summary

Growers provide a public service by absorbing the cost of implementing BMPs

- Agricultural agencies and producers have great interest in financial information related to the costs of production and how they are impacted by BMP implementation.
- Financial information in BMP decision-making and published scientifically sound cost assessments are rare.



Issue Summary

What We Did

- Facilitated a session on **crop budgets** during a BMP stakeholder meeting that defined the priorities and challenges in incorporating BMP **costs** into **enterprise budgets**.

Our Goal

- Advance understanding of **crop budgets** and generate ideas on how they can be used to **assess BMP costs**.

Issue Summary

The Meeting

BMP Agents & Agencies Meeting

March 27, 2018

Lake County Extension Office, Tavares

10 a.m. – 12:30 p.m.

Dr. Kelly Morgan



Stakeholders

16 Participants

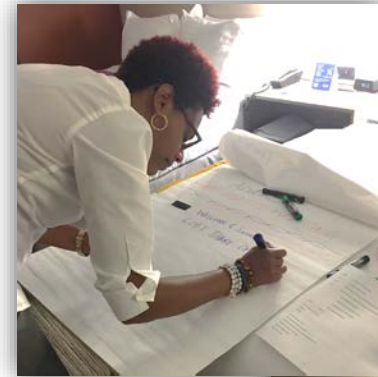
- Florida Department of Consumer Services (FDACS)
- Florida Farm Bureau Federation
- Lake County Government
- UF/IFAS Extension
- U.S. Department of Agriculture (USDA)



Techniques

Pre-Practicum

- Ten conference calls
- Emails
- Met with team at NRLI sessions
- Communication with Dr. Morgan & Lake County Extension contact Juanita Popenoe
- Set-up meeting night before
- Food prep/snacks/coffee/lunch



Techniques

NRLI Tools

- Effective meeting design
- Process agenda
- Ice-breaker
- Shared information
- Facilitation
- Breakout/small groups
- Listing ideas



Techniques

Share Information

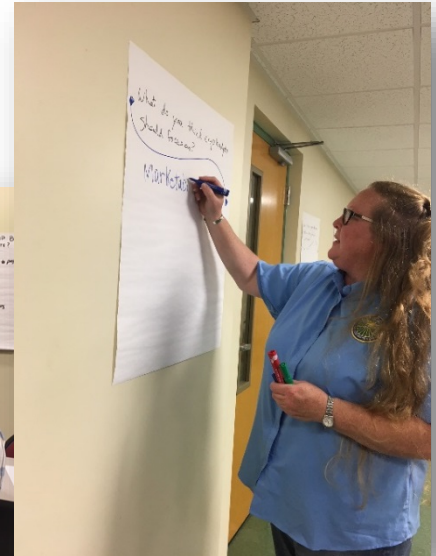
- Presentation on crop budgets
- Educate stakeholders on different crop budgets
- Encourage participatory discussion



Techniques

Brainstorming/Breakout Groups

- Random selection: count-off
- 4 groups of 4
- 3 rooms
- Flip charts & markers
- Timekeeper



Techniques

Questions

How can we use crop budgets to determine BMP Costs?

Where is there synergy between BMPs and other production practices?

What do you think crop budgets should focus on?

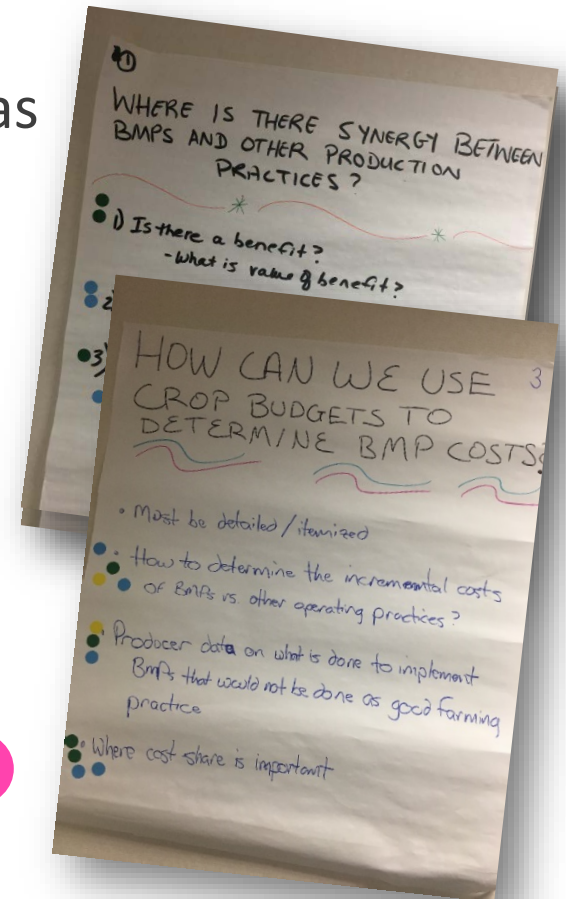
Techniques

Presented information

- Group presentation of brainstorming ideas
- Grouping of information (Dot exercise)

Received Feedback

- Evaluation Survey
- Debrief
- Lunch
- Networking



Outcomes

What do You think Crop Budgets Should Focus On?

- Reduction of impacts to environment from nutrients and water usage

Where is there Synergy between BMPs and other Production Practices?

- Preventing regulatory impacts
- Compare existing efficiencies to projected BMP improvements

How can We use Crop Budgets to Determine BMP Costs?

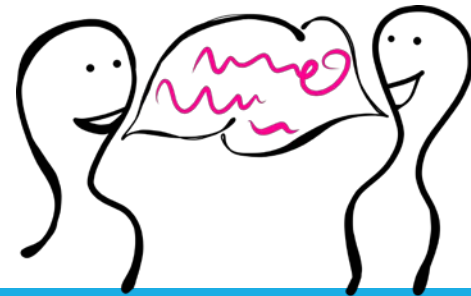
- Must be Detailed/itemized
- How to determine the incremental costs of BMPs vs other operating practices?
- Where cost-share is important

Outcomes

Evaluation Survey

- *“How important budget is”*
- *“Very valuable information”*
- *“Group activity and discussion”*
- *“Great presentation on crop budgets”*
- *“Group work was invaluable. Engaged different stakeholder groups”*
- *“Seeing different budgets”*
- *“Seeing how important budgets are in planning BMPs”*

73% gave a rating of good or excellent on the effectiveness of the meeting structure



Outcomes

Advanced Discussion

- Received positive input
- Participants significantly advanced their thoughts and knowledge on crop budgets
- Participants are interested and supportive of continuing efforts related to crop budgets



Lessons Learned

What Worked

- Preparation
- Process agenda
- Timekeeping
- Communication
- Keeping participants fed



Lessons Learned

What Would Have Worked

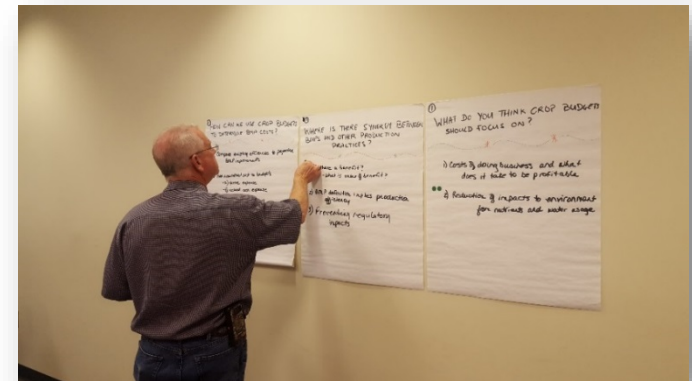
- Bios of meeting participants
- Survey participants
- Use stakeholder matrix
- Paraphrase question
- Real practice run on agenda
- Adapting to someone else's meeting
- Assistant for other logistics



Next Steps

What's Next

- Distribute results back to participants
- Potential crop budget presentations
- Making crop budgets part of BMP discussion
- Article in producer-targeted publication



Special Thanks

- Juanita Popenoe and Dr. Kelly Morgan
- UF/IFAS Lake County Extension Office
- Florida Farm Bureau Federation



Questions?

