

# Addressing Equine Best Management Practices in the Lake Okeechobee Basin Management Action Plan area



Fellows: Courtney Davis,  
Audrey Kuipers  
and Jason Mathis

# Situation – Issue

- Agriculture has been one of the most targeted for contributing factors of accelerated nutrient levels in St. Lucie River and estuary
- Equine industry hasn't been focused on as much as a non-point source of pollution
  - Especially in recreational riders

Final Lake Okeechobee Basin Management Action Plan – December 2014

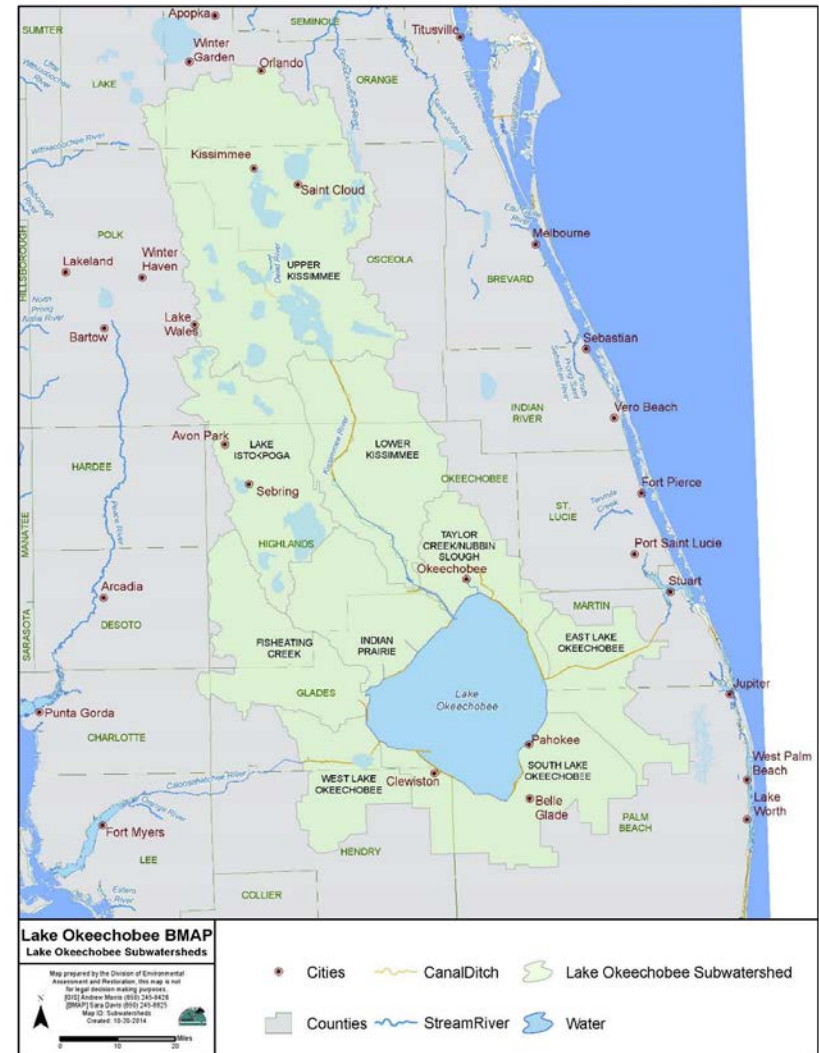


FIGURE ES-1: LAKE OKEECHOBEE WATERSHED

# The Problem...



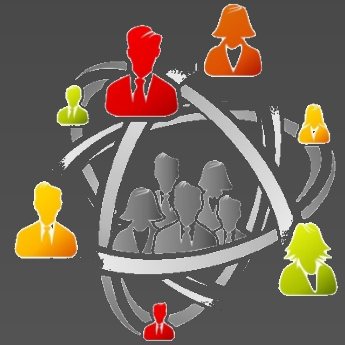
# Situation – Why & What?

- What - brought stakeholders in the Lake O BMAP area together to discuss what the adoption of this plan means for horse owners
- Why - get feedback on program needs from agency and horse owner perspectives
- Help the equine community to proactively participate in BMPs





# Stakeholders



- FDEP Environmental Administrator
- FDACS-OAWP Environmental Specialist
- UF/IFAS Extension Livestock Agent
- Okeechobee SWCD Board  
Supervisor/Multiple Horse Owner
- Commercial Equine Facility Rep- 90 head/  
boarding/training
- Recreational Barn owner- 24 stall barn/43  
head
- Homeowner- multiple homeowner on 20ac
- Homeowner- multiple on 5 ac

# Stakeholders



# Techniques



- Concept of stakeholders
- Practice empathic listening
- Effective Agenda Planning-state purpose and goal of meeting at the beginning
- Build Community through icebreaker question
- Group decision making-groan zone
- Facilitating-making sure everyone contributed
- Facilitating- restating answers/comments so everyone was clear
- Facilitating- using visual aids/flip chart
- Tro



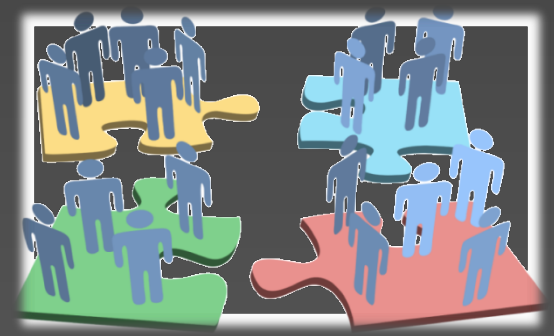
# Outcomes



- Awareness of natural resource impacts
- Awareness of BMAPs and BMPs
- Feedback on practices they wouldn't do vs. what they would do
- Participants both were happy to participate
- Positive experience for all participants
- Excited for new options for equine BMPs



# Lessons Learned



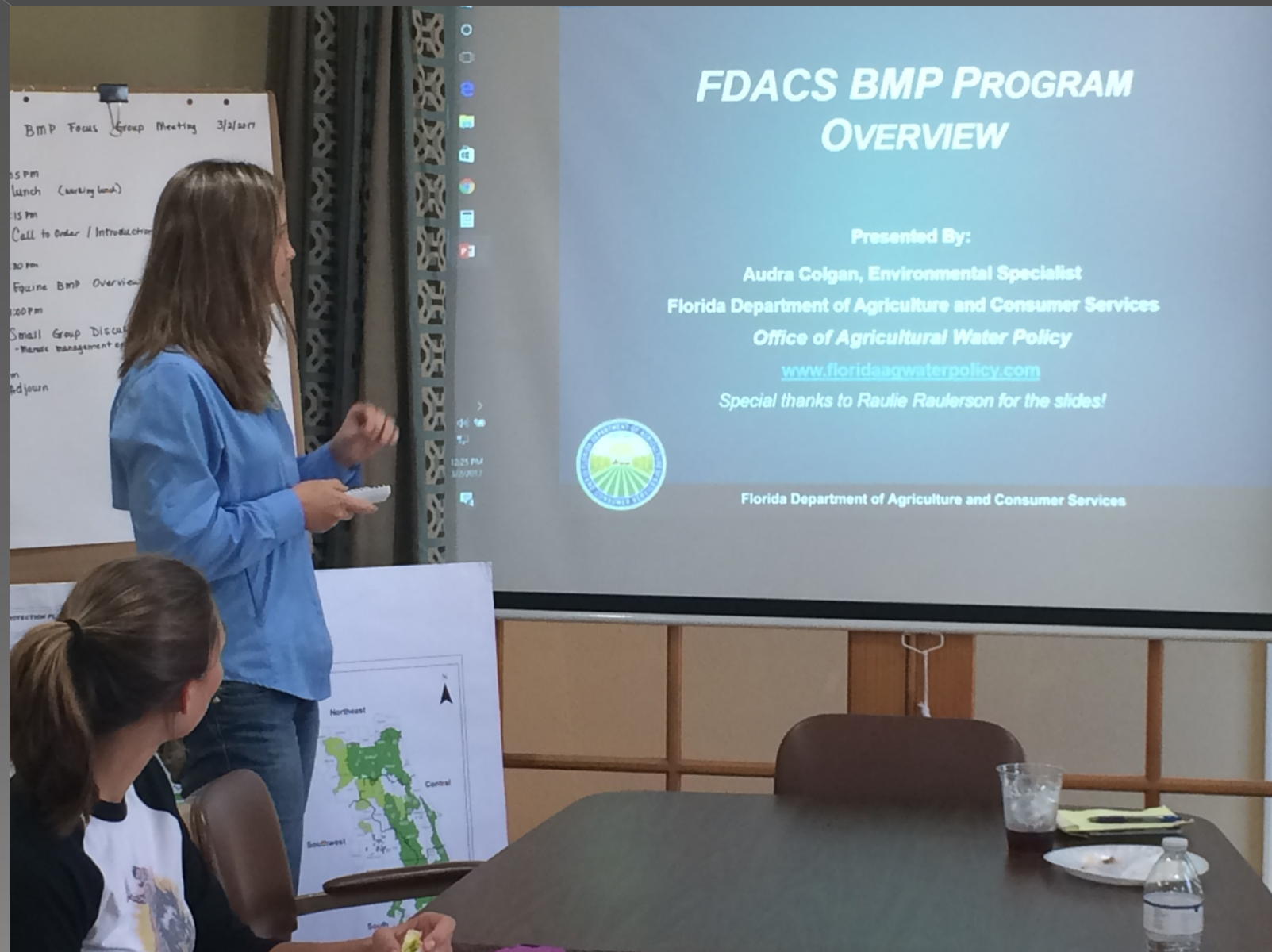
- Most people were not aware of loads they contributed
  - One horse can produce around 30 lbs of manure daily
  - Certain practices that others in community were doing (i.e., piling on canals)
- Meeting created interest in implementing BMPs
- Gathered information for applicable cost share programs and incentives



# Lessons Learned



- Format – nice flow with information overview, then small groups
  - Both small groups had an “expert” to answer questions
- Good intro – got people acquainted
- Small groups had better discussion than whole groups
- If BMPs are cost efficient – they would implement



# FDACS BMP PROGRAM OVERVIEW

Presented By:

Audra Colgan, Environmental Specialist  
Florida Department of Agriculture and Consumer Services  
Office of Agricultural Water Policy

[www.floridaagwaterpolicy.com](http://www.floridaagwaterpolicy.com)

Special thanks to Raulie Raulerson for the slides!



Florida Department of Agriculture and Consumer Services

BMP Focus Group Meeting 3/2/2017

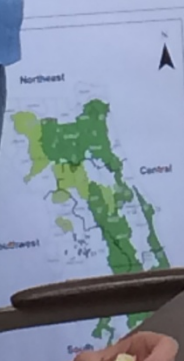
5 PM  
Lunch (working lunch)

1:15 PM  
Call to Order / Introduction

3:30 PM  
Equine BMP Overview

5:00 PM  
Small Group Discussion  
- Watershed management options

Adjourn



# Lesson Learned

- Reframe situation – set a scenario
- Left questions more open ended
- Have fellows facilitate discussion in small groups
- Meet with Agency group leaders to prep their roles





# Next Steps

- Presentation was made to Okeechobee Soil and Water Board on results of meeting
  - Interested in expanding cost-share programs for area
- Develop a potential cost-share options for recreational horse owners



# Thank You!

