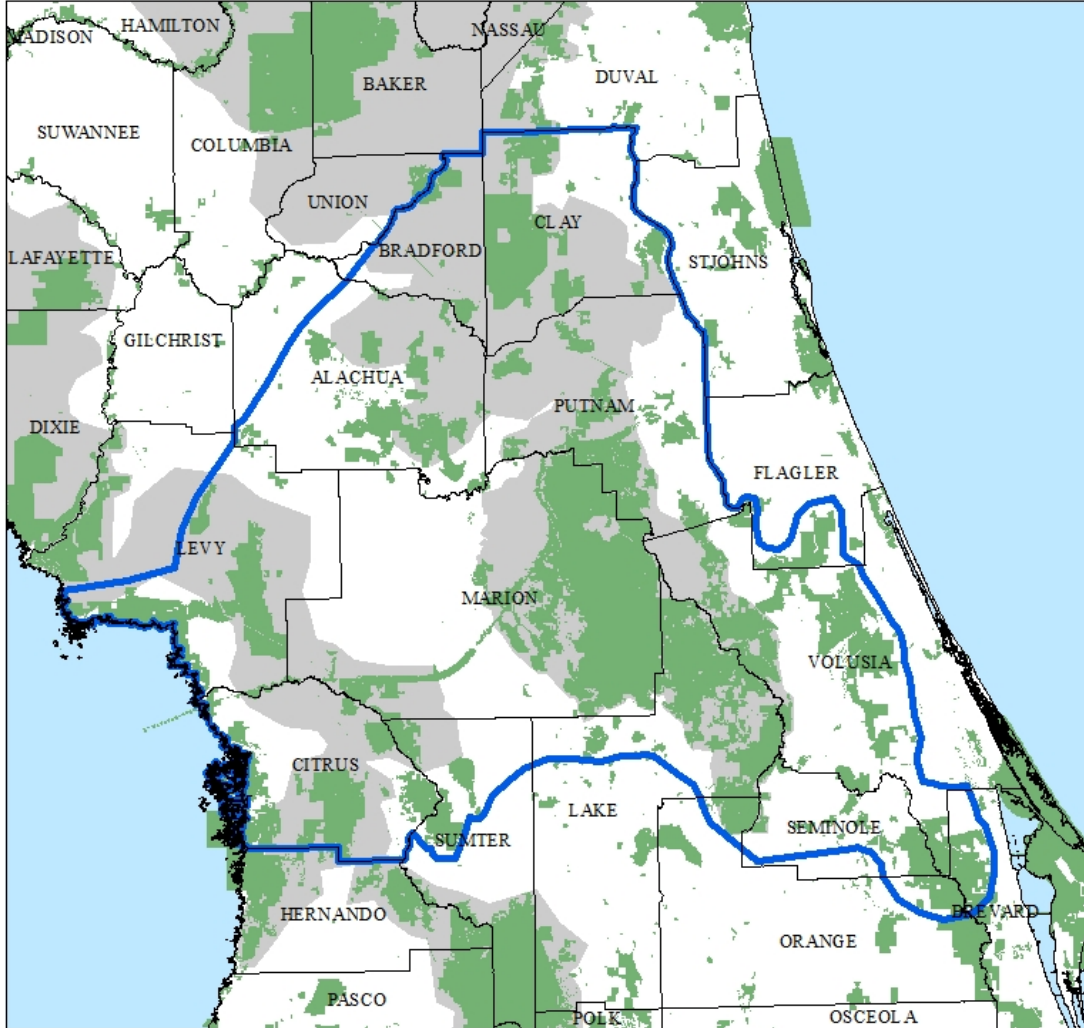




Photo: Carlton Ward


Developing a process to engage partners in (spatial) prioritization of longleaf habitat restoration and management in the Ocala Local Implementation Team region

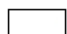
Cheryl Millett





**How do you
choose where
to work
across almost
6 million
acres?**


**Ocala Longleaf Pine (LLP) Local Implementation Team boundary
in relation to primary LLP Significant Geographic Areas, LLP
Whole System and existing conservation lands.**

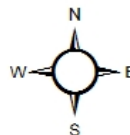
 Ocala LIT boundary

 County boundaries

 LLP Whole System in Florida

 Existing conservation (FNAI flma_201309)

0 5 10 20 Miles




Map: Cheryl Millett; Date: 3/10/2014



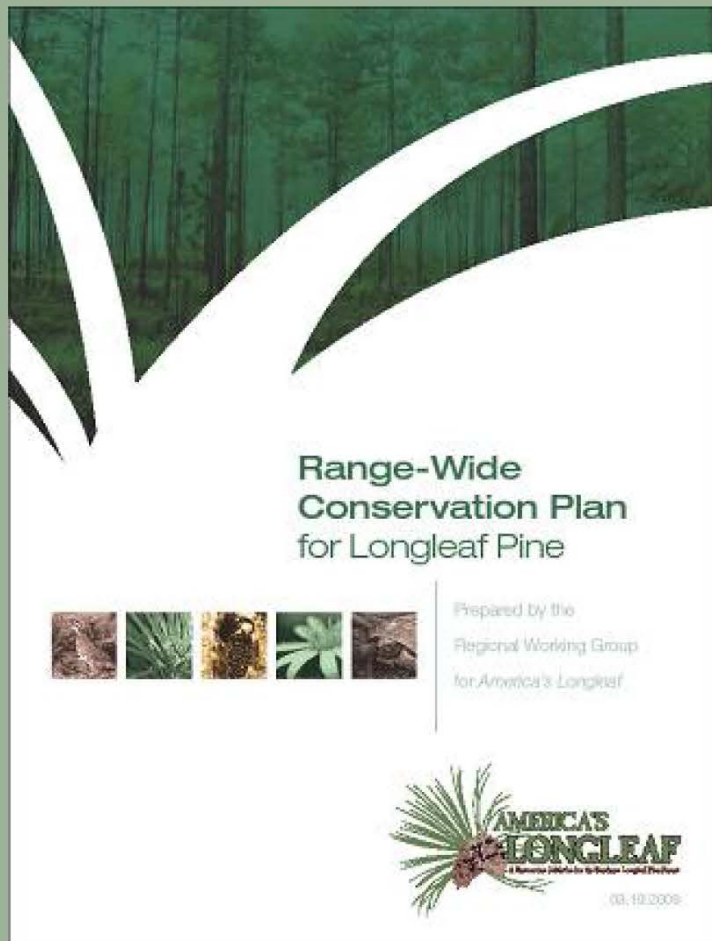
Agenda

- Intent and potential conflict
- Process of prioritization
- NRRI skills applied
- Lessons learned

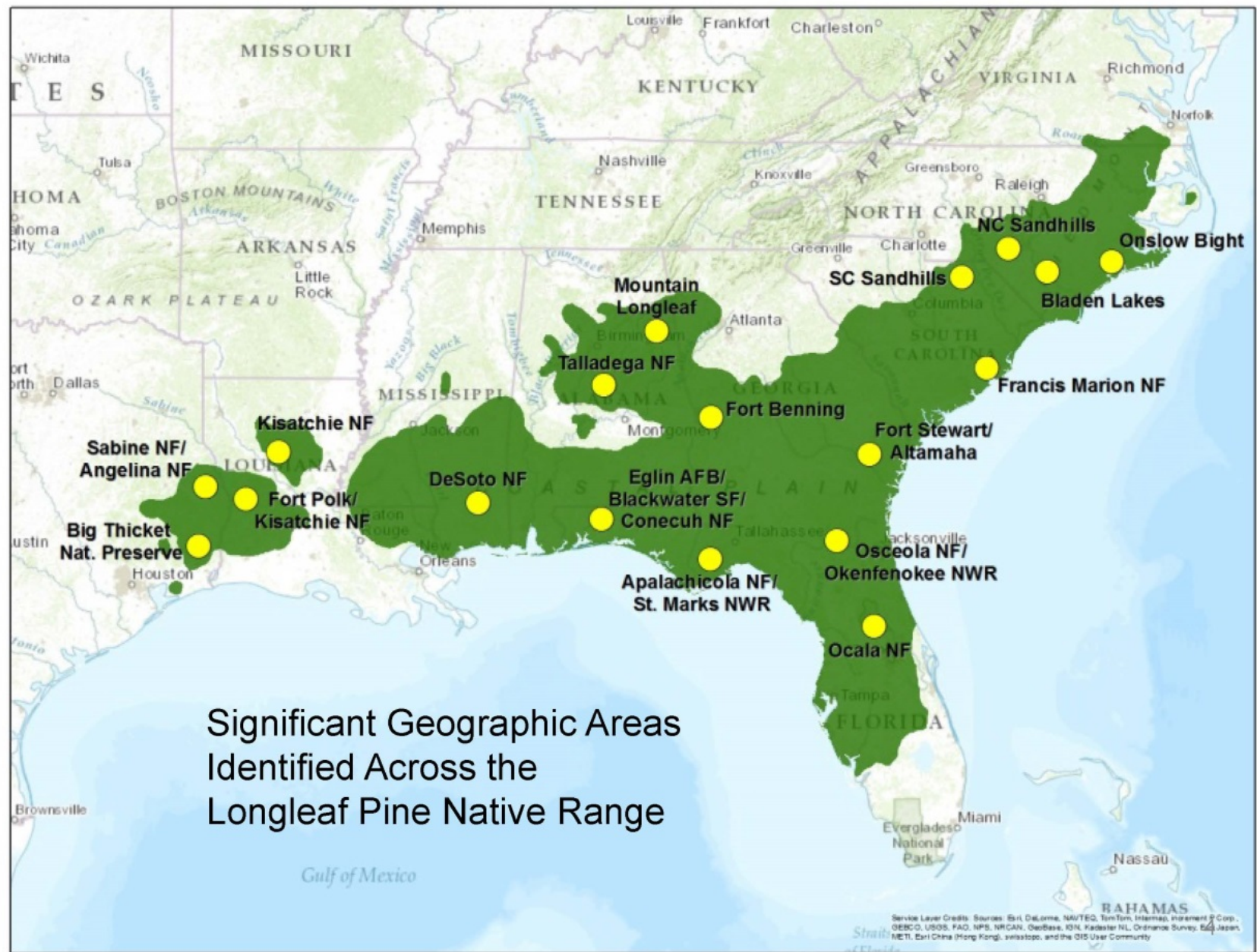




Range-wide Conservation Plan For Longleaf Pine



- ❖ **Comprehensive Plan released in March 2009**
- ❖ **Developed by Regional Working Group representing 22 organizations**
- ❖ **Supported by USDA Forest Service, Department of Defense, and the U.S. Fish and Wildlife Service**
- ❖ **Identifies Significant Geographic Areas**



Service Layer Credits: Sources: Esri, DeLorme, NAVTEQ, TomTom, Intermap, iPlanet, Corp., GEBCO, USGS, FAO, NPS, NRCAN, GeoBase, IGN, Kadaster NL, Ordnance Survey, Esri Japan, METI, Esri China (Hong Kong), Swisstopo, and the GIS User Community

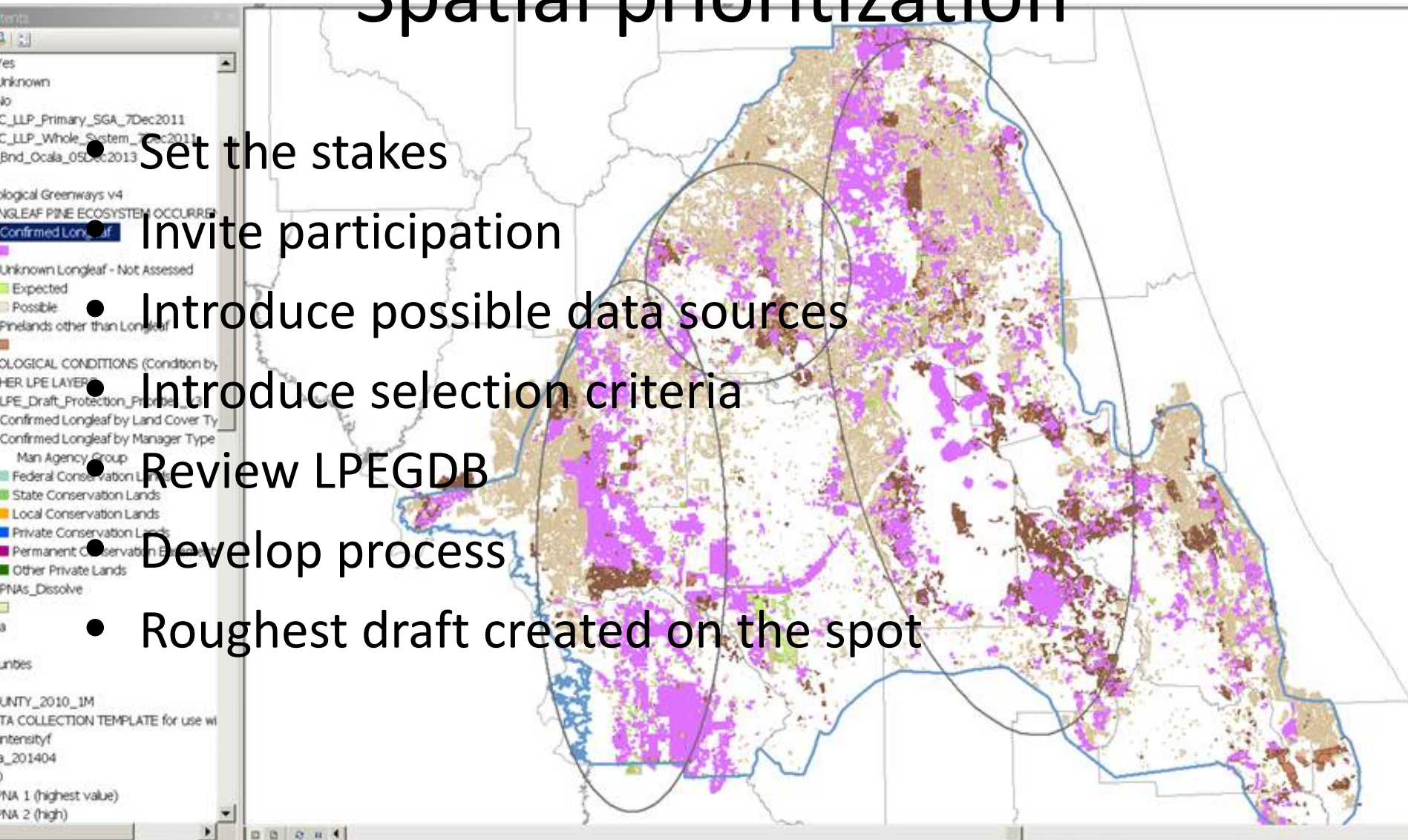
Partnership

built on North Central Florida Prescribed Fire Working Group MOU

- Federal
 - Camp Blanding Joint Training Center
 - USDA Forest Service
 - US Fish and Wildlife Service
 - USDA Natural Resource Conservation Service
 - National Interagency Prescribed Fire Training Center
- State
 - Florida Department of Environmental Protection
 - Florida Fish and Wildlife Conservation Commission
 - St. Johns River Water Management District
- Regional
 - Alachua County Environmental Protection Department
 - City of Gainesville
- Other organizations
 - Alachua Conservation Trust
 - The Nature Conservancy
 - University of Florida Board of Trustees
- **Key partners not on MOU**
 - Florida Natural Areas Inventory
 - Wildand Restoration International

Spatial prioritization

- Set the stakes
- Invite participation
- Introduce possible data sources
- Introduce selection criteria
- Review LPEGDB
- Develop process
- Roughest draft created on the spot



NRLI skills


- June 2015: presented mapping project
 - design meeting
 - build trust
 - framing
 - situation assessment
 - apply listening skills to understand stakeholder interests and perspectives
- October 2015: outline process and rough draft
 - design meeting
 - apply listening skills
 - use strategies to help groups engage in dialogue and participatory decision-making

Outcomes


- draft product and a process
- participants are so far on board





Ocala Local Implementation Team boundaries and priority areas for land management and restoration

 Ocala LIT boundary (4.9 M acres)

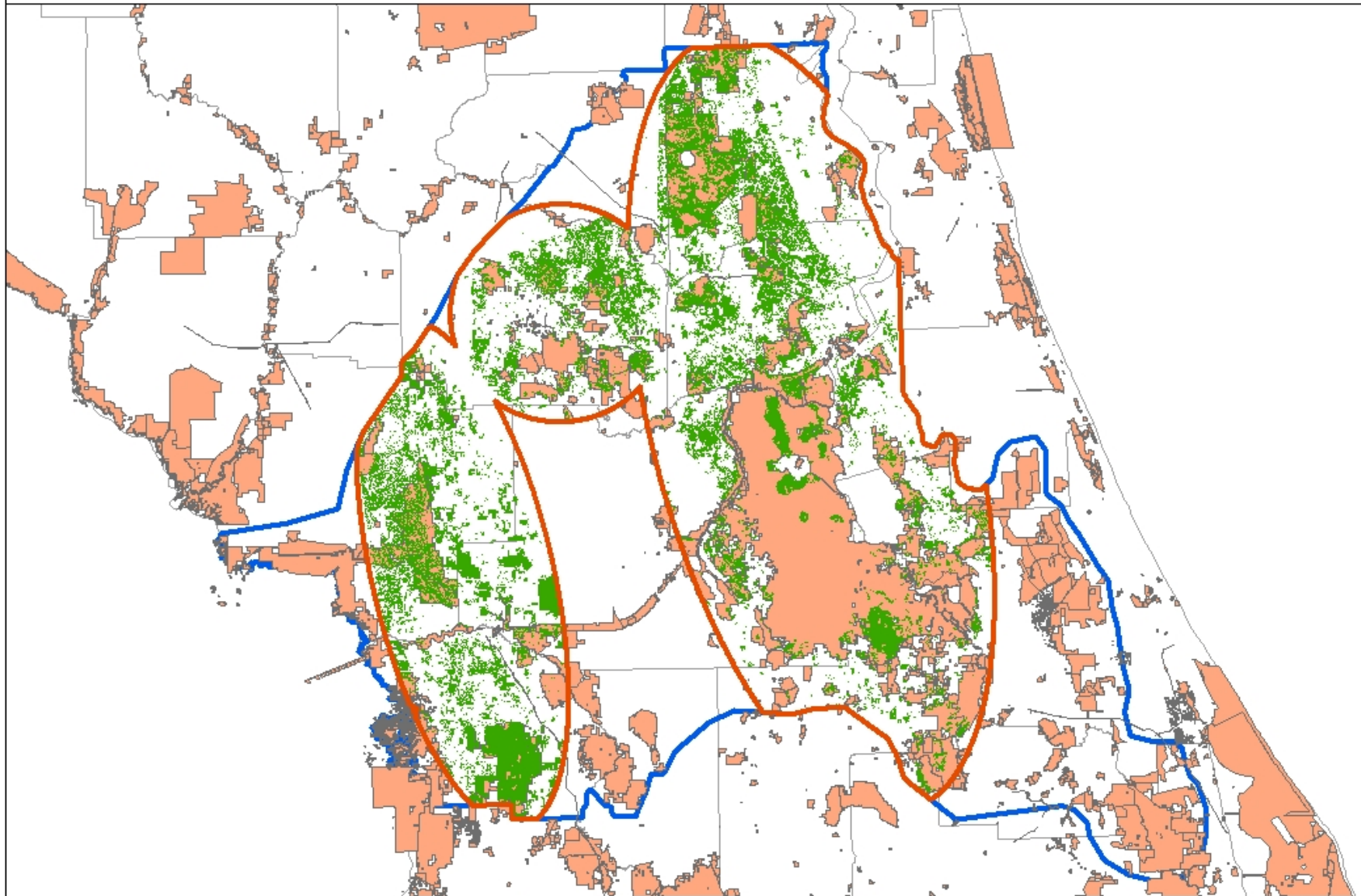
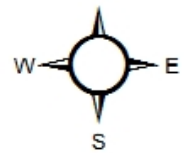
 Ocala LIT draft priority areas (1.48 M acres)

 Confirmed and unknown longleaf (LPEGDB v. 3)
in priority areas (740,328 acres)

 Conservation lands (FNAI)

 Counties

0 12.5 25 50 Miles



Lessons learned



Next steps

