

You're Invited to Participate!

**Caloosahatchee Basin
Blue World/Green World
Scenario Planning Workshop**

**Tuesday, March 31, 2015
1:00 PM-4:00 PM**

**Hendry County IFAS Extension
1085 Pratt Boulevard
LaBelle, FL 33935**

Work with stakeholders from Lee, Hendry, and Okeechobee counties to improve communication between stakeholders, build collaborative partnerships, and identify mutually beneficial solutions to difficult water quality issues.

**Bonnie Wolff Pelaez,
Florida Department of
Agriculture and Consumer
Services**

**Gene McAvoy, UF/IFAS
Hendry County Extension**

**Jessica Mendes, Lee County
Environmental Policy**

NRLI Class XVI



**FLORIDA
NATURAL**

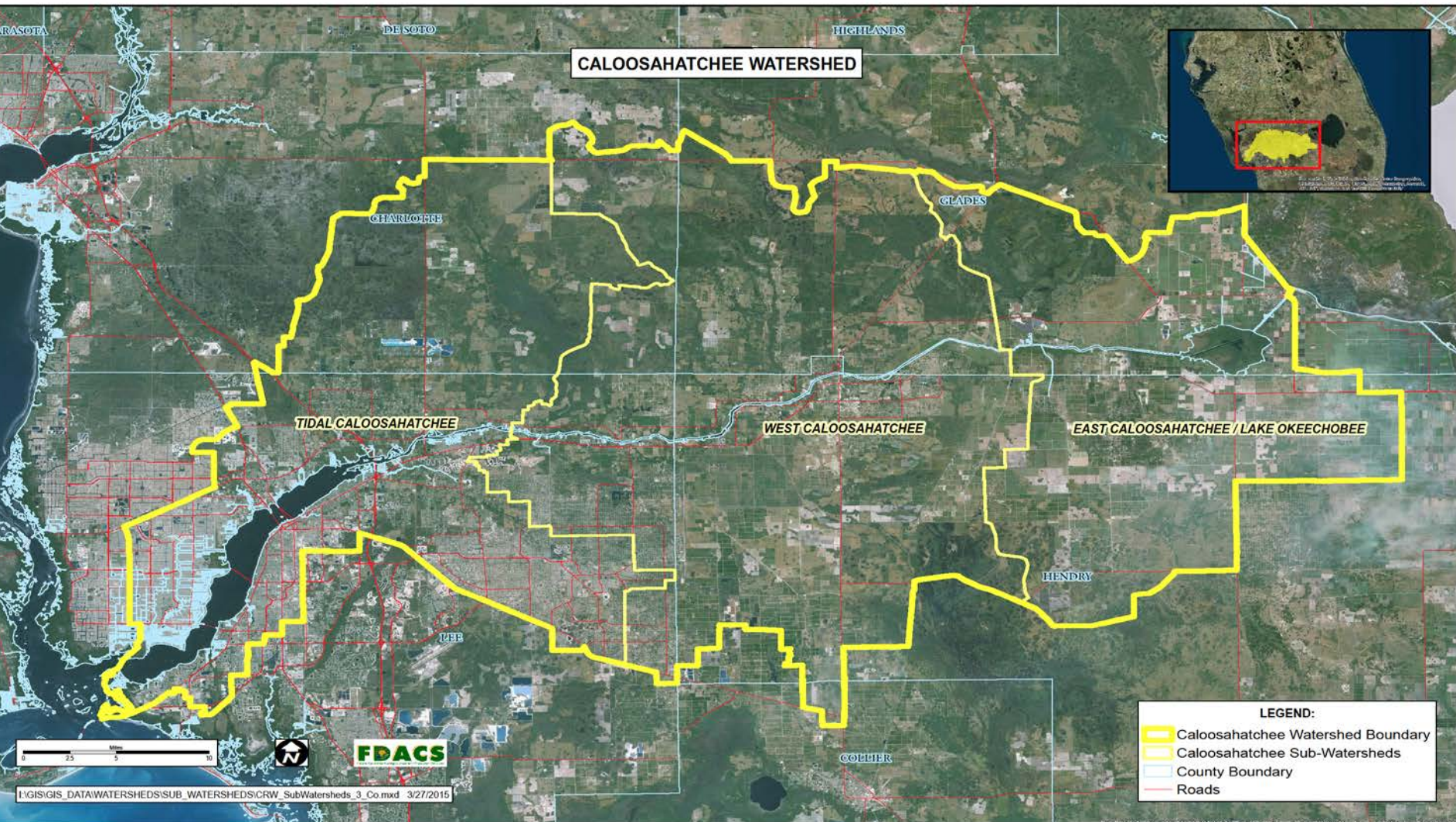
**RESOURCES
LEADERSHIP
INSTITUTE**



Situation

- Competing positions and diverse perspectives surrounding water quality/quantity issues
- Rural interior communities, ag land and coastal urbanized communities are all connected by one important natural resource
- TMDL/BMAP process taking place for the Caloosahatchee Basin

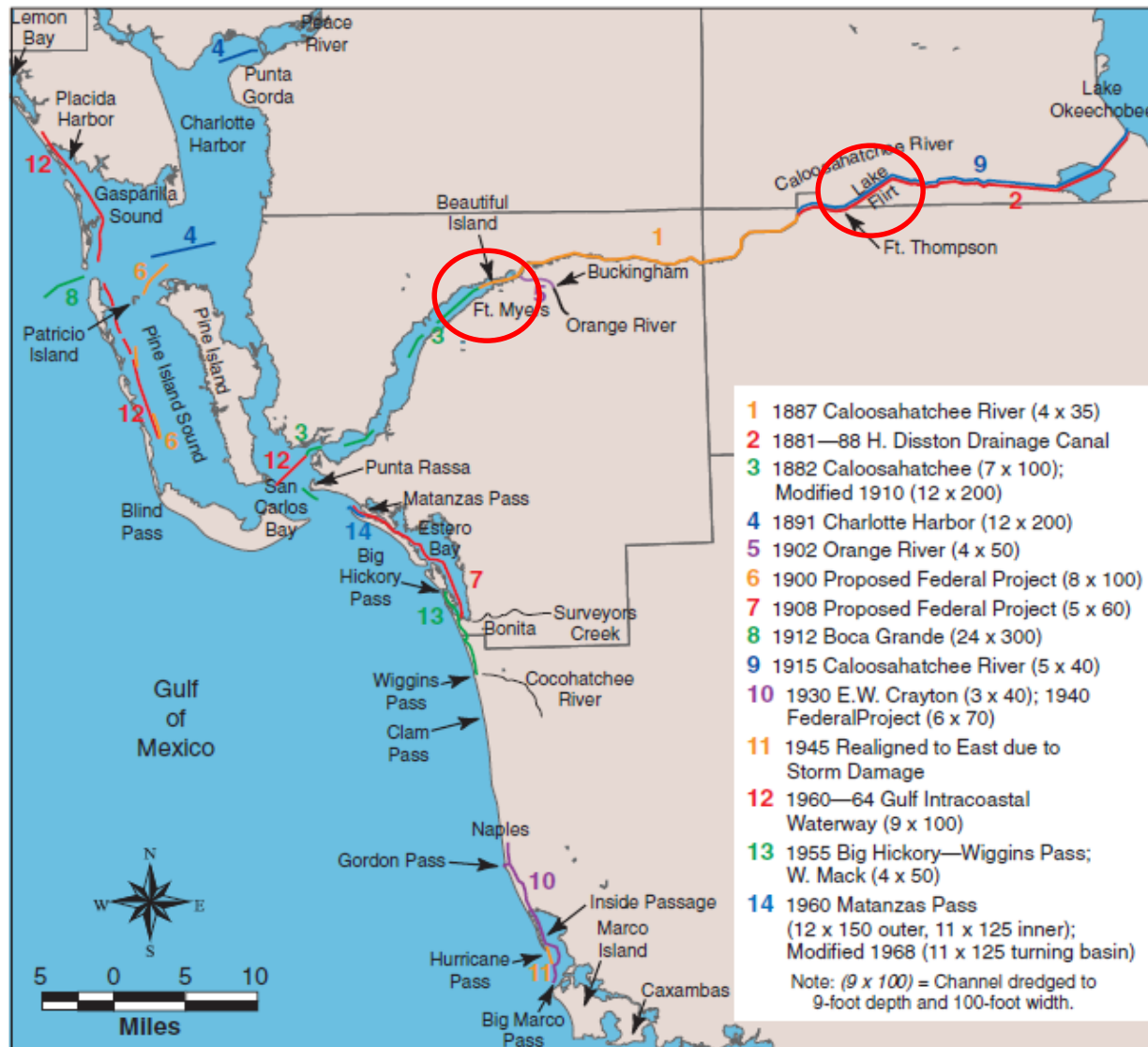
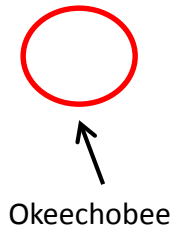
Caloosahatchee Basin



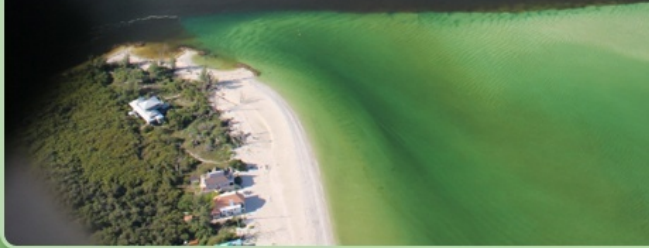
Goals

- To improve communication between stakeholders
- Build collaborative partnerships
- Identify mutual interests with regard to water quality/quantity issues
- Hopefully help move the needle towards mutually beneficial negotiations on TMDL/BMAP/water quality and quantity issues

The Caloosahatchee connects disparate communities and interests



MAP 2.
Surveyed routes and waterways on the Southwest coast and along the Caloosahatchee River.



Stakeholders

- Agricultural interests
- Environmental groups
- Locally elected officials
- Government agencies
- Planning officials
- Natural Resource Professional
- Concerned citizens
- Consultants/Lawyers



Caloosahatchee Basin Visioning Workshop

March 31, 2015

- **Green World** - It is the year 2022 and the Southwest Florida environmental, social and economic landscape is in beautiful shape. The Caloosahatchee River runs clean, the estuarine areas are beautiful and Lake Okeechobee is in better shape than it has been in a hundred years. It is hard to imagine how things could possibly be better. You are meeting with fellow community members to review the previous ten years and document what happened to present your story to the US Congress as an example of success.
- **Blue World** - It is the year 2022 and the Southwest Florida environmental, social and economic landscape is in sad shape. Lake Okeechobee has turned into a virtual cesspool, the Caloosahatchee River is green and slimy and the coastal tourism industry has collapsed. It is hard to imagine how things could possibly be any worse. You are meeting with fellow faculty and staff to review the previous ten years and document what happened to present to the U.S. Congress as an example of a community who hasn't succeeded.
- **Yellow World** - It is the year 2022 and the Southwest Florida environmental, social and economic landscape is in so-so shape. Things could be much better or much worse and for every step forward it seem the area has taken one step back.. You are meeting with fellow faculty and staff to review the previous ten years and document what happened to present to the U.S. Congress as an example of a community who has neither succeeded nor failed, but stagnated.



FLORIDA
NATURAL RESOURCES
LEADERSHIP INSTITUTE





Techniques

- Scenarios Planning
- Identifying diverse stakeholders
- Group norms
- Process agenda
- Interests vs. positions
- Listening
- Facilitation
- Small groups
- Group exercise
- Collaborative approach
- Gathering/engaging diverse points of view
- Building a shared framework of understanding
- **Understanding group dynamics!**



Outcomes

- Working relationships and interaction
 - Interaction like this not previously experienced
 - Provided environmental groups place at the table
 - Vocal stakeholders vs. quieter ones
 - Contentious, uncomfortable and **new** in this capacity
- Group results: Blue/Green/Yellow
 - **Blue**: rough start, diverse group, excellent presentation
 - **Yellow**: Focused, organized, good presentation
 - **Green**: Difficult personalities, time management, no consensus
- Take a few days to 'sink in'

Survey Results

“[It was] Interesting and useful to hear the various viewpoints in a comfortable forum. In a public forum people may not have been so open.”

“It was good to get people thinking and talking.”

“I am a little more educated and can see how other stakeholders may feel the way they do; however, it did not change my point of view”

“ Collaborative meetings like this to come up with solutions [is what success looks like]. Meeting the water quality targets is the definition of success.”

“The interest groups [sic] have been involved with the issues and each other for better than 20 years. We understand on an individual basis that we are not monsters. This exercise was a vast over-simplification of the issues and the existential questions raised by these issues. This exercise did not change those perceptions and the idea that three hours could help us better address these issues and build relationships with each other is sweet, but not helpful.”

“BMAP and water quality seems to be a step in a direction, whether it be right or wrong in others eyes. It's an attempt at a solution which is better than nothing. I think any effort at this point should not be frowned upon”

Lessons Learned

- More time needed
- More facilitation on our part
- Prepare for difficult personalities
- Team building is an important step
 - Breaks could have provided opportunities for socialization
 - Could have leveled the playing field, improved outcome and performance
- Clarity
 - One or two missed the point, but the rest got it
 - More reiteration regarding role play/scenarios, purpose, new concept

Lessons learned

- Presentations that allow creativity bring humor to the process
- More realistic scenario/time frame
- Process agenda: great tool, way ahead of schedule
- Importance of preparation
- Facilitation and collaboration is a living process

Next steps

- DEP will coordinate the BMAP process; stakeholders will participate
- SFWMD quarterly meetings for agencies will include visioning participants
- As result of NRLI, we will approach work situations differently

A photograph of a large bridge spanning a body of water. In the foreground on the left, there is a weathered wooden post with two thick brown ropes tied around it. The bridge has multiple concrete piers and a long, straight deck. The water is dark blue with some ripples. The sky is clear and blue. The word "Questions?" is overlaid in white text in the center of the image.

Questions?