

Regional Trail Planning in NE Brevard County

An Opportunity for
Synergy and
Collaboration

NRLI Fellows Class VII

Practicum Review (October 2007)

Steve Miller, SJRWMD

Michael Green, Glatting Jackson



Outline

- History/Issue
- Process
- NRLI Tools
- What's Next?



The Beginning

- Titusville developed a plan w/o considering owners or terrain
- Discovered in January 2006
- Plan included multiple owners without regard for owners goals and objectives



Issue

Below are quotes from the plan

- **Greater Titusville Heritage Auto Trail**
Roadways connecting heritage sites, including those where connection by bike trail is not feasible, would be designated as part of the Heritage Trail System.



Clearly a paved auto trail has no business being here.

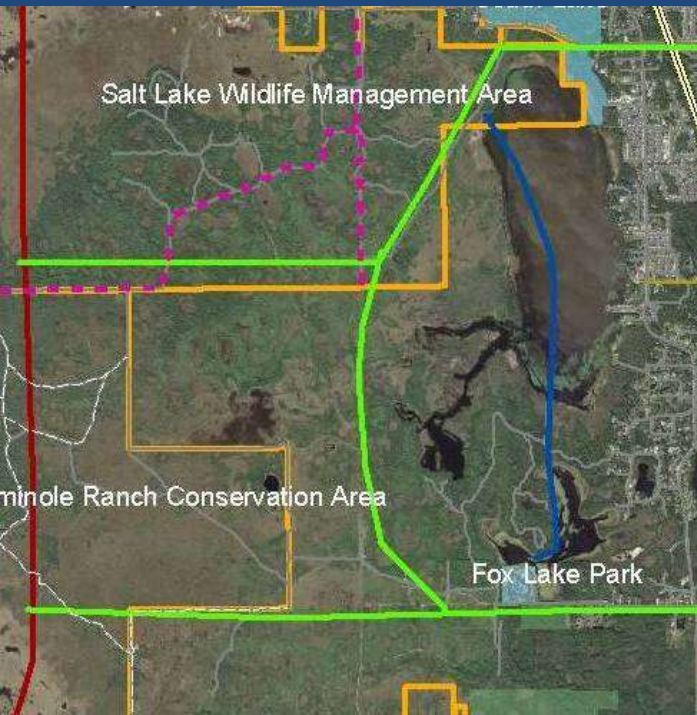


Issue

Below is quoted from the plan regarding the green trail.

None of the owners typically pave trails and they typically locate trails in existing roads

- **Greater Titusville Heritage Trail Greenways and Trails**
A system of greenways and multiuse, paved trails would connect to all heritage sites possible, provide wildlife corridors where possible, and be routed to include as much natural scenery as possible.



So how do we recover the fumble?

- Get partners together
- Investigate all existing plans
- Determine what is acceptable to each partner
- Look for ways to develop synergy



G.J. McCarthy photo

Where:

- Merritt Island National Wildlife Refuge
- Casual, Comfortable Setting
- Familiar Setting Minimized Distractions

Stakeholders:

- SJRWMD (Steve “Fuego” Miller, Pete Henn)
- Brevard County EEL (Mike Knight, Brad Manley)
- Brevard County Parks/Recreation (Terry Lane)
- Brevard County MPO (Barbara Meyer)
- FFWCC (Dave Turner)
- USFWS (Dorn Whitmore)

Are all present and accounted for? Hmmm. Stay Tuned.

Approach:

- Bring Major Landowner Representatives Together
- Primary Stakeholders

Meeting Goals:

- Share Information
- Obtain Input
- Communicate
- Build Consensus
- Initiate Process



Resources:

- Abundant Public Land
- Willing Cooperative Partners
- Interest to Improve Trail Linkage
- Agency Resources
- Camaraderie/Trust



Group Qualities:

- Familiarity
- Mutual trust
- Mutual desire to create a better product

Personality styles

- Active/Passive Listening
- Group Dynamics (**How was I reacting? Facilitator, or consultant?**)
- Difficulty withholding opinion; more active
- Tension (public meeting, official)
- Slow going at first
- Ask questions to generate input/opinion

NRLI Tools/Concepts:

- Situation Assessment
- Agenda (beginning, middle, end; topics identified, but flexible)
- Collaboration, Friendship
- Neutral Facilitators (well, sorta)
- Types of Listening (Sharing perspectives; getting it all in the open)
- Meeting goal

(and, of course, donuts)



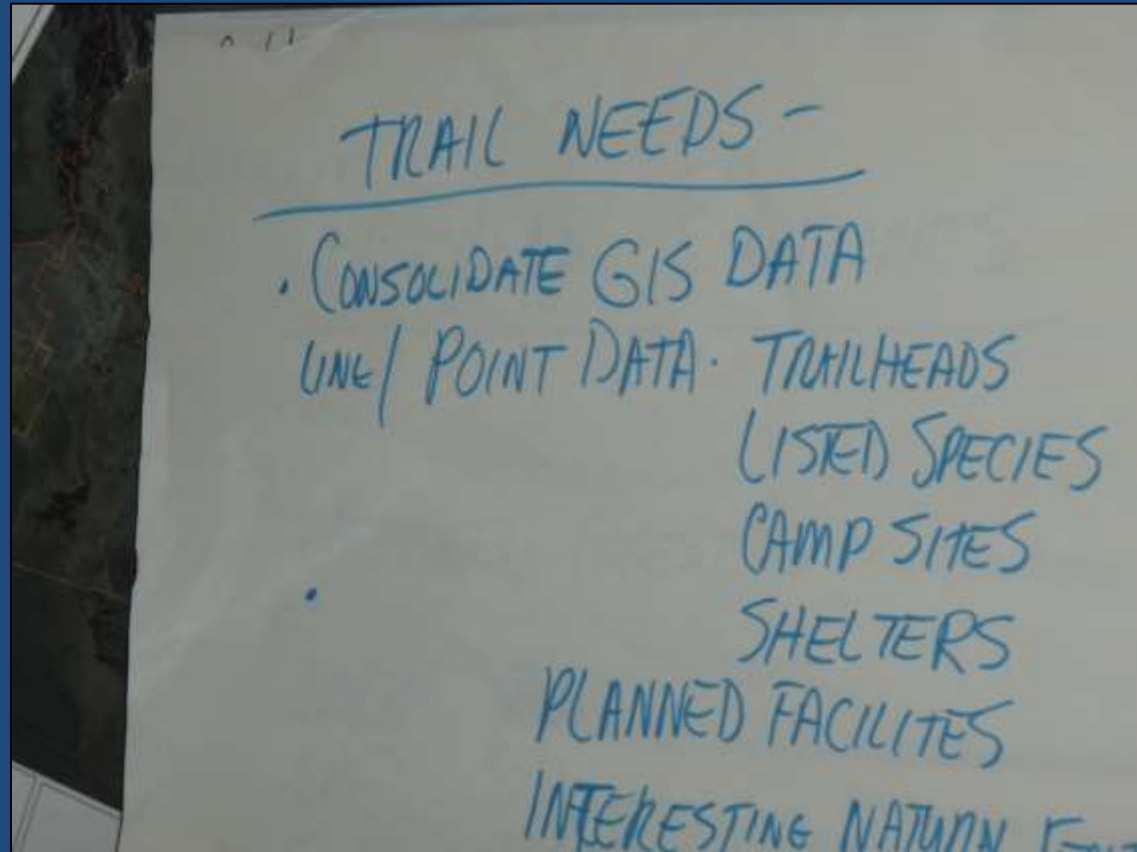
Five Levels of Involvement:

1. Presenting and Reporting
2. Comments and Questions
3. Extensive Discussion
4. Convergence and Alignment
5. Ownership and Commitment



Challenges:

- Agency Policy, Process (EEL Selection Committee)
- Hunting Conflicts/Multiple Use Conflict
- Sensitive Natural Ecosystems
- Listed Species
- Pending Acquisition



Proposed Greater Titusville Heritage Trail



The St. Johns River Water Management District prepares and uses the information for its own purposes and the information may not be suitable for other purposes. The information is provided as is. Further documentation of the data can be obtained by contacting St. Johns River Water Management District, Geographic Information Systems, Program Management, P.O. Box 1425, 4640 Reid Street, Titusville, Florida 32775-1425 Tel: (386) 329-4175

Proposed Greater Titusville Heritage Trail



Proposed trail Options
 Option 1
 Option 2



0 0.45 0.9 1.8 3.7 Miles

Legend

- Potential Future Public Ownership
- Private Ownership
- SURWMD Boundaries
- Public Lands
- Brevard County Lands

2004 DOQQ Photo Date 12/20/2003

The St. Johns River Water Management District prepares and uses the information for its own purposes and the information may not be suitable for other purposes. This information is provided as is. Further documentation of this data can be obtained by contacting St. Johns River Water Management District, Geographic Information Systems Program Manager, 200 Box 1425, 4640 Road Street, Marietta, Florida 32170-1425 tel: (889) 326-4171

Next Meeting (11/14/07):

- Update Maps/GIS
- New Members/Stakeholder Representation
- City of Titusville, Florida Trail Association
- Expanded Area of Concern
- “Peeling the Onion”



Thank you.

Questions?