

Solary Canal Project
Regional Stormwater Facility
Stakeholder Involvement Process

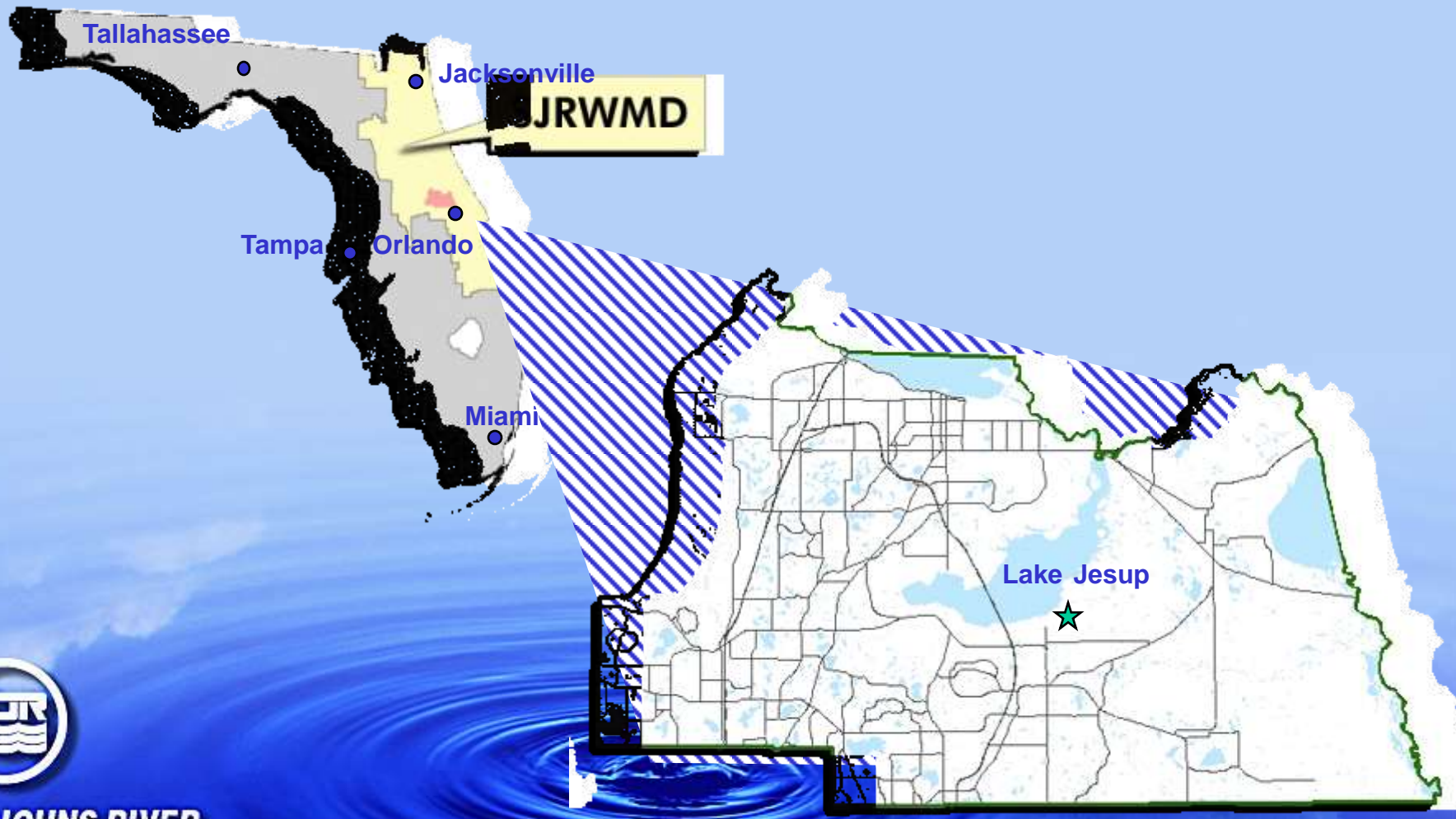
Practicum NRLI 2007

Regina Lovings Morse, MSEne
October 12, 2007



**ST. JOHNS RIVER
WATER MANAGEMENT DISTRICT**

Lake Jesup, Seminole County, Florida



**ST. JOHNS RIVER
WATER MANAGEMENT DISTRICT**

Waterbody Impaired?



**ST. JOHNS RIVER
WATER MANAGEMENT DISTRICT**

Sometimes the answer is obvious, Sometimes less so.
Lake Jesup is a TMDL Impaired Water Body

Lake Jesup Tributary Area



**ST. JOHNS RIVER
WATER MANAGEMENT DISTRICT**

Water Quality Goals for Lake Jesup

- TMDL's

 - 52% reduction in total nitrogen

 - 37% reduction in total phosphorous

- PLRG

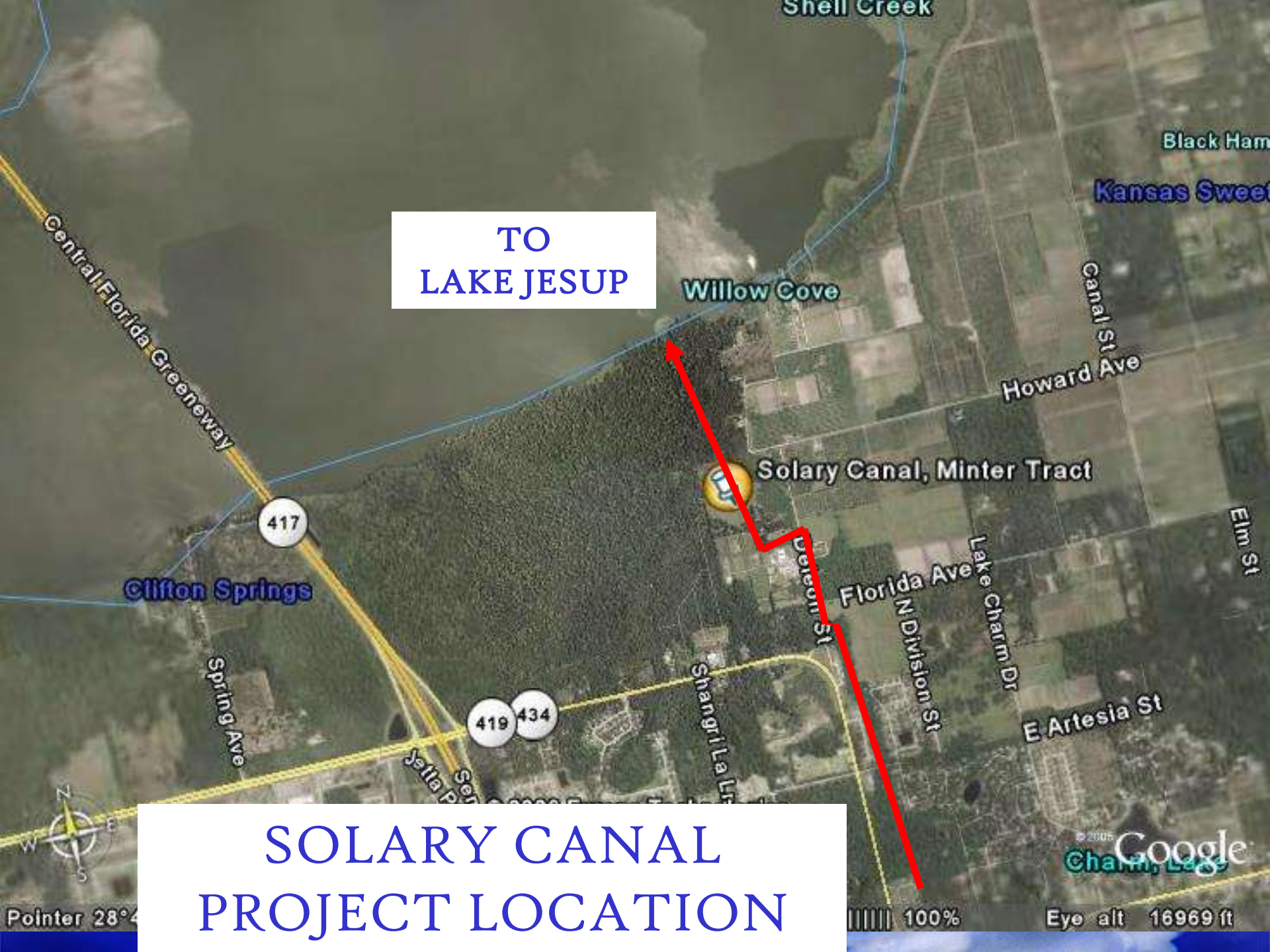
 - 50% reduction in existing phosphorous loads reaching the lake



**ST. JOHNS RIVER
WATER MANAGEMENT DISTRICT**

TO
LAKE JESUP

SOLARY CANAL
PROJECT LOCATION



Project History

- Jesup Basin Surrounded by Fast Growth
- No Regional Water Quality or Quantity Control
- Regional Flooding
- Minter Family Proposal to Sell 29.12 acres, 2004
- SJRWMD Purchase January, 2005



**ST. JOHNS RIVER
WATER MANAGEMENT DISTRICT**

Solary Canal Project Objectives

- Improve Water Quality
- Flood Attenuation in 1639 acre drainage area



**ST. JOHNS RIVER
WATER MANAGEMENT DISTRICT**

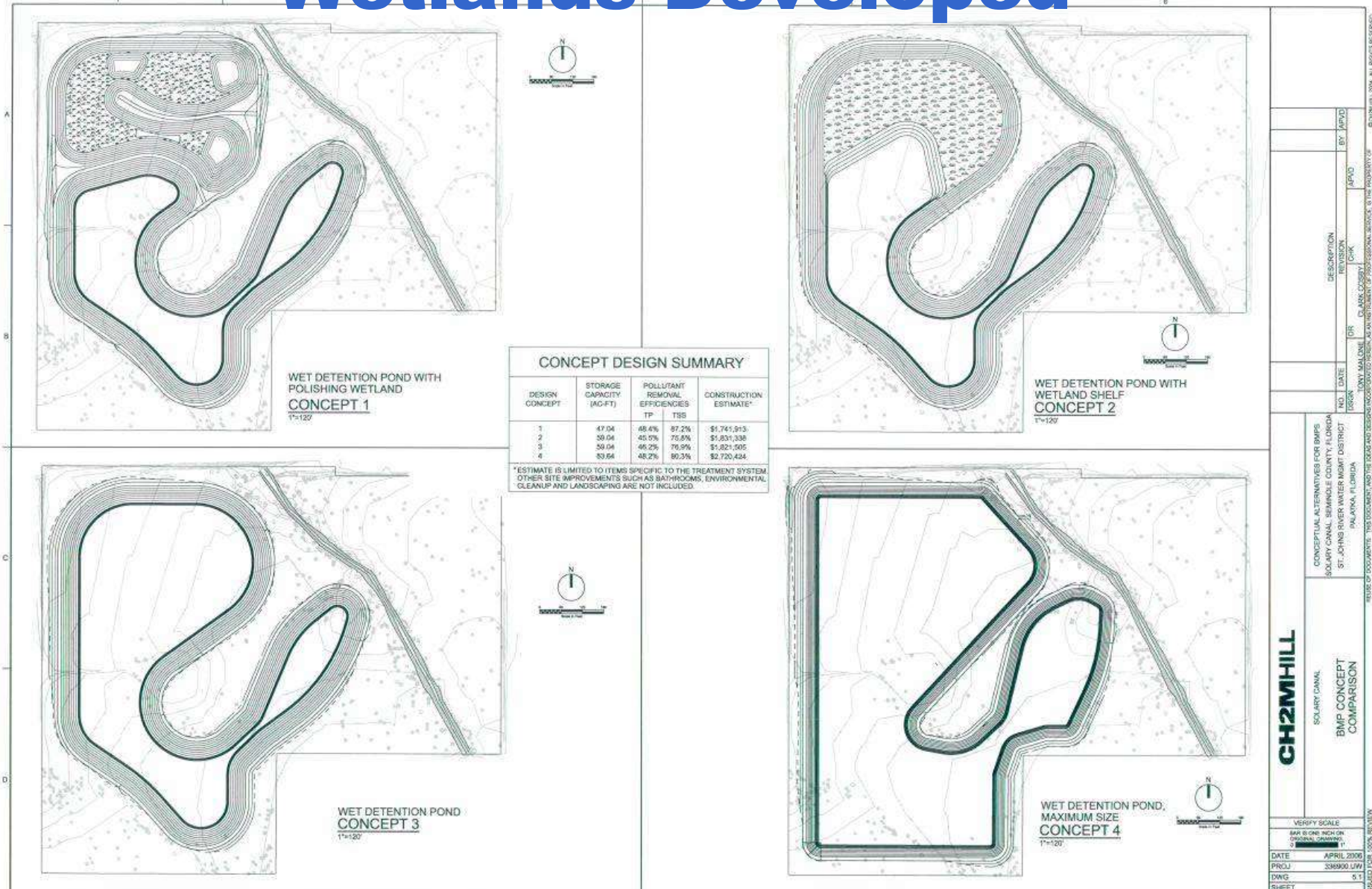
Project Scope

- Solary Canal Conceptual Design, June, 2006
- 30%, 60%, November, 2006 to September 2007
- Final Design, Permitting, Current Phase



**ST. JOHNS RIVER
WATER MANAGEMENT DISTRICT**

Four Proposed Pond and Wetlands Developed



WET DETENTION POND WITH POLISHING WETLAND
CONCEPT 1
T=120'

WET DETENTION POND WITH WETLAND SHELF
CONCEPT 2
T=120'

WET DETENTION POND
CONCEPT 3
T=120'

WET DETENTION POND, MAXIMUM SIZE
CONCEPT 4
T=120'

CONCEPT DESIGN SUMMARY

DESIGN CONCEPT	STORAGE CAPACITY (AC-FT)	POLLUTANT REMOVAL EFFICIENCIES		CONSTRUCTION ESTIMATE*
		TP	TSS	
1	47.04	48.4%	87.2%	\$1,745,915
2	59.04	45.0%	76.8%	\$1,831,338
3	59.04	46.2%	76.8%	\$1,821,505
4	83.64	48.2%	80.3%	\$2,720,424

*ESTIMATE IS LIMITED TO ITEMS SPECIFIC TO THE TREATMENT SYSTEM
OTHER SITE IMPROVEMENTS SUCH AS BAYWYCKONS, ENVIRONMENTAL CLEANUP AND LANDSCAPING ARE NOT INCLUDED.

CH2MHILL

CONCEPTUAL ALTERNATIVES FOR BMPs
SOLARY CANAL, SEMINOLE COUNTY, FLORIDA
ST. JAMES RIVER WATER MGMT DISTRICT
PALATKA, FLORIDA

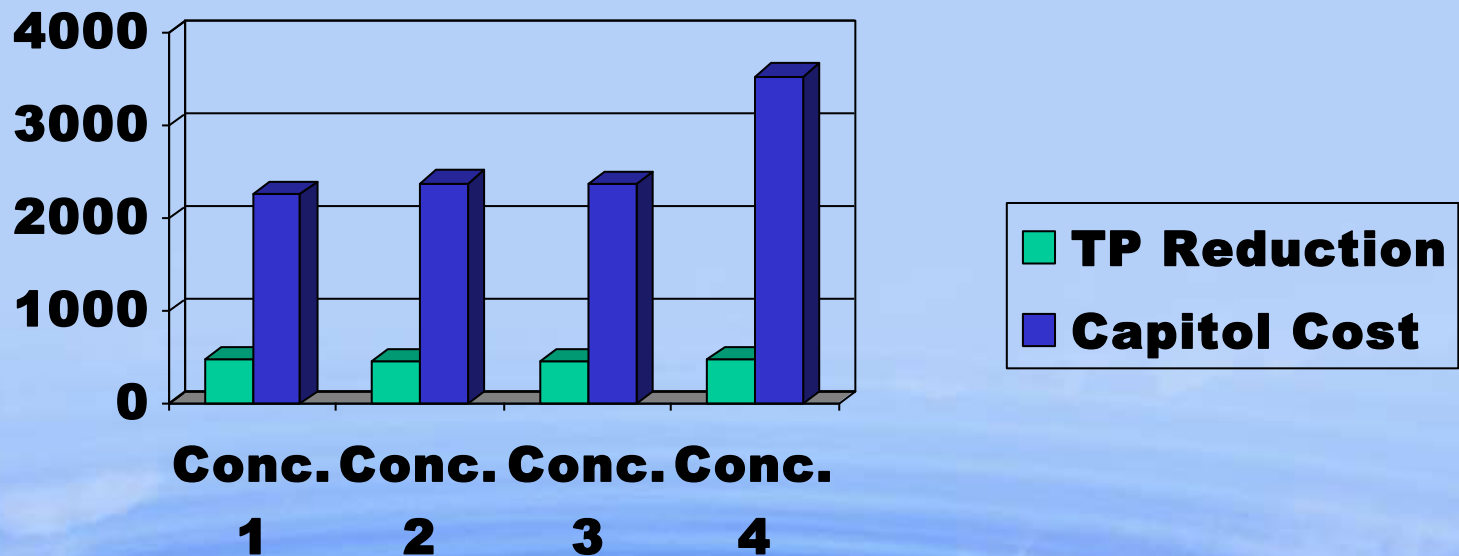
DESCRIPTION: BMP CONCEPT COMPARISON

DATE: APRIL 2008
PROJ: 338900 LWW
DWG: 5.1
SHEET

DESIGNER: TONY MALONE
CHECKER: CLARK COBBY
DRAWN BY: JAYD

FILENAME: G:\proj6_338900.dwg PLOT DATE: 5/2/2008 PLOT TIME: 4:48:48 PM

Estimated Performance and Cost



**ST. JOHNS RIVER
WATER MANAGEMENT DISTRICT**

STAKEHOLDERS

- SJRWMD
- Seminole County
- City of Oviedo
- City of Winter Springs
- Friends of Lake Jesup



**ST. JOHNS RIVER
WATER MANAGEMENT DISTRICT**



Major Stakeholder Meetings

- May 4, 2006 & November 16, 2006
- May 2, 2007, City of Winter Springs
- August 14, 2007, 60% Design
- 22 Meetings to date
 - Combined Groups
 - TAC
 - Individual Group Meetings
- Next Meeting: New Stakeholders October 16, 2007



**ST. JOHNS RIVER
WATER MANAGEMENT DISTRICT**

Public Workshop Format



Initial Public Meeting May 4, 2006



**ST. JOHNS RIVER
WATER MANAGEMENT DISTRICT**

PUBLIC WORKSHOP



- Consensus Approach
- Discussed Overall Projects Goals
- Reviewed Project Options



Public Involvement from Initiation of Project

**ST. JOHNS RIVER
WATER MANAGEMENT DISTRICT**

Feedback Received

- 25 Locals in Attendance
- “Liked Passive Recreation Aspect”
- Concerned w/ Project Management
- “Keep as many trees as possible”



**ST. JOHNS RIVER
WATER MANAGEMENT DISTRICT**



SURPRISES

- Previous owner opposes project approval
- Other Stakeholders reject \$ participation
- New Stakeholder Interest



**ST. JOHNS RIVER
WATER MANAGEMENT DISTRICT**

Consequences of Obtaining Input

- Informed the Public prior to Project Start
- Identified Key Citizen Concerns
- Identified Project Supporters
- Garnered Project Design Ideas
- Identified Need for Individual group meetings



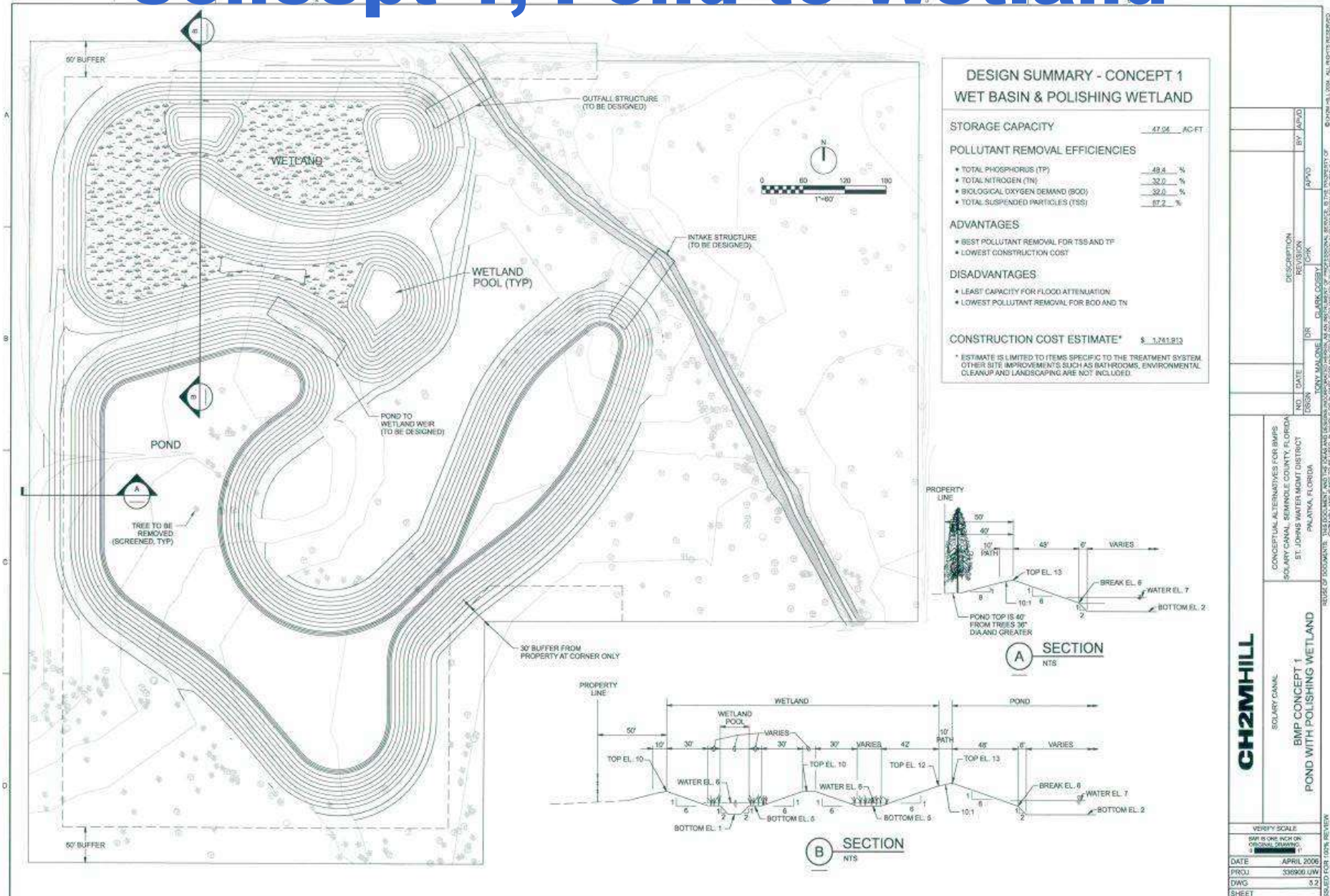
Recommendation Combined Pond & Wetland Concept 1

- Best pollutant removal, 48.4% TP
- Lowest capital cost
- Pond plus wetland habitat creates more diversity
- Passive recreational opportunities for the public



**ST. JOHNS RIVER
WATER MANAGEMENT DISTRICT**

Concept 1, Pond to Wetland



Lessons Learned

- Including Locals and Local Gov't at the start of project
- Find new support when coalition bails \$
- Cooperate, Cooperate, Cooperate
- Teamwork and Communications are priority
- Drainage provided by a project matter



**ST. JOHNS RIVER
WATER MANAGEMENT DISTRICT**



**ST. JOHNS RIVER
WATER MANAGEMENT DISTRICT**





**ST. JOHNS RIVER
WATER MANAGEMENT DISTRICT**



Thank you!



**ST. JOHNS RIVER
WATER MANAGEMENT DISTRICT**