



**Florida
Fish and Wildlife
Conservation
Commission**

**Alternative-
Mobility Permit
(AMP)**

The seal of the Florida Fish and Wildlife Conservation Commission is a circular emblem. It features a central illustration of a bird in flight, possibly a seagull, with its wings spread. The bird is positioned over a stylized representation of a fish. The entire scene is enclosed within a circular border containing the text "FLORIDA FISH AND WILDLIFE CONSERVATION COMMISSION" in a serif font. The seal is rendered in a light, semi-transparent green color.

**Florida Fish and Wildlife
Conservation Commission
Wildlife Management Area
Program**



Big Shoals

WILDLIFE MANAGEMENT AREA



In Cooperation with
Division of Forestry
Savannah River Water Management District
Department of Environmental Protection

Mobility-Impaired Hunt





Florida Fish and Wildlife Conservation Commission

FWC certified mobility-impaired hunters are:

- **Paraplegic**
- **Hemiplegic**
- **Quadriplegic**
- **Permanently dependent upon a wheelchair for ambulation**
- **Permanently required to use braces or prosthesis on both legs**
- **Complete single-leg amputee**
- **Permanently required to use assisting aids to walk**



Florida Fish and Wildlife Conservation Commission

Issue

**Allow Mobility-Impaired Hunters
to use ATVs on WMAs**



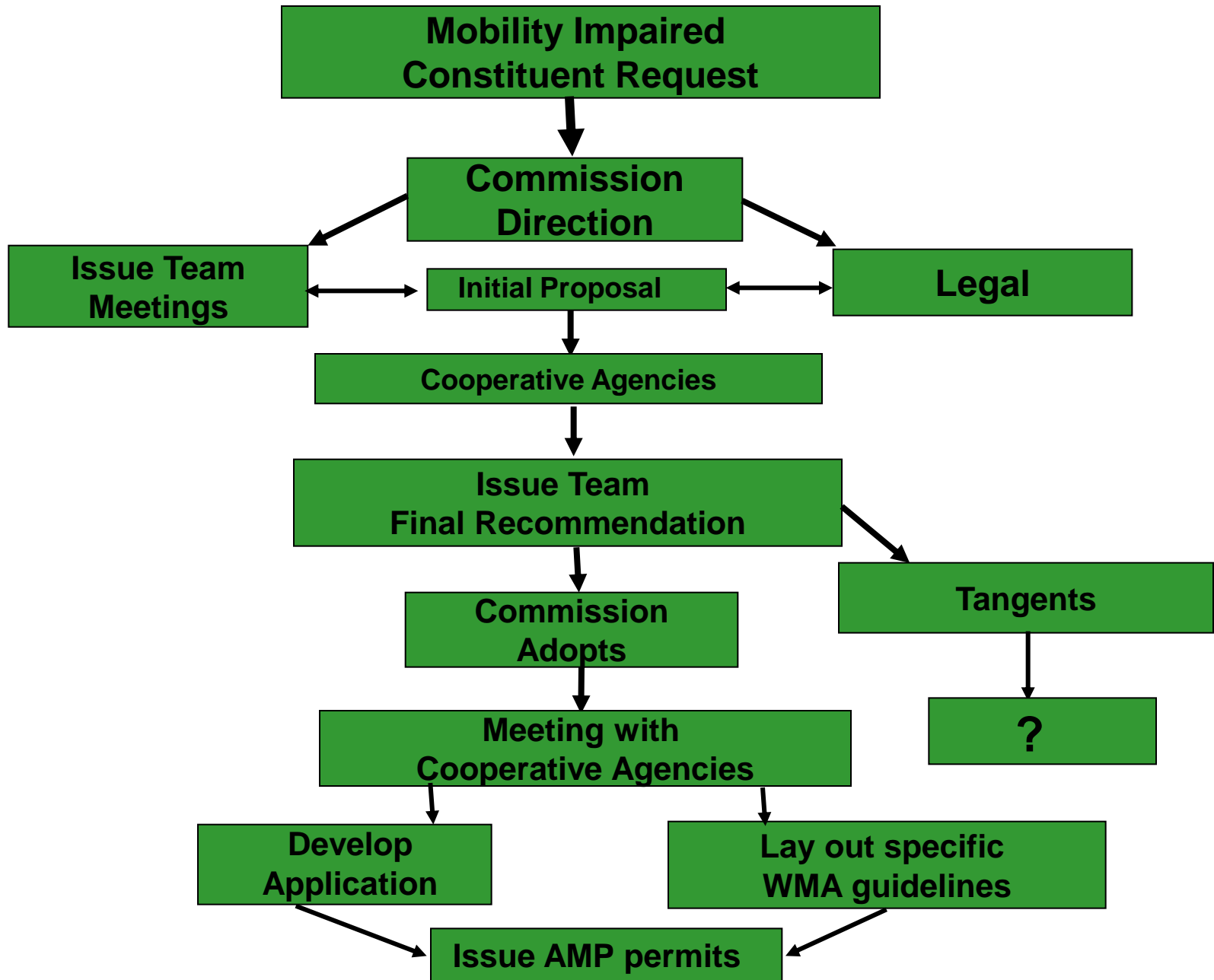


Florida Fish and Wildlife Conservation Commission

Issue Team:

- Five FWC Regional Directors
- FWC attorney
- FWC personnel officer/ADA coordinator
- Two members of the Florida Disabled Outdoors Association

Alternative Mobility Permit – Process Plan





Florida Fish and Wildlife Conservation Commission

Results

- **Permit Template**
- **Applicant Criteria/Application**
- **Rule FAC 68-9.008**
- **Area Specific Stipulations**
- **Permit Issuance**





Florida Fish and Wildlife Conservation Commission

Lessons Learned:

- **Open Mind**
- **Team Participation**
- **Clear Vision**
- **Leadership Position**
- **Lead/Coordinator**
- **Influence**
- **Tangents**

QUESTIONS?

